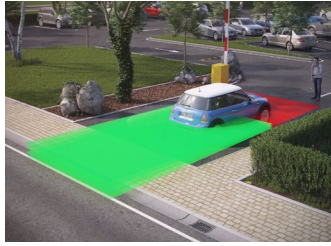
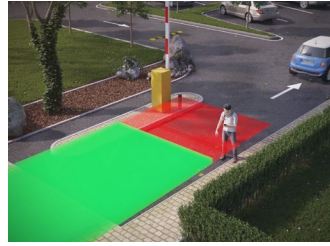


APPLICATIONS



Gate & Barrier Presence Detection



Pedestrian Presence Detection



Gate & Barrier Activation

TECHNICAL SPECIFICATIONS

Technology	LASER scanner, Time-of-Flight measurement
Detection Mode	Motion & Presence
Max. Detection Range	32' x 32' (9 ¾ m)
Remission Factor	> 2%
Angular Resolution	0.3516°
Emission Characteristics	
IR LASER	Wavelength 905 nm; max. output pulse power 0.10 mW (CLASS 1)
Red Visible LASER	Wavelength 635 nm; max. output CW power 3 mW (CLASS 2R)
Supply Voltage	10 – 35 VDC @ Sensor Terminal
Peak Current at Power-On	1.8 A (Max. 80 ms @ 35 V)
Power Consumption	< 5 W
Response Time	
Motion Detection	typ. 200 ms (adjustable)
Presence Detection	typ. 20 ms (max. 80 ms)
Output	2 electronic relays (galvanic isolated – polarity free)
Max. Switching Voltage	35 VDC / 24 VAC
Max. Switching Current	80 mA (resistive)
Switching Time	t _{ON} = 5 ms; t _{OFF} = 5 ms
Output Resistance	typ 30 Ω
Voltage Drop on Output	< 0.7 V @ 20 mA
LED-Signal	1 Blue LED: Power-on 1 Orange LED: Error status 2 Bi-colored LEDs: Detection / Output Status (Green = no detection, Red = detection)
Dimensions	3 5/8" (W) x 2 3/4" (H) x 5" (D) mounting bracket: + 1/2"
Cable Length	33'
Material	PC / ASA
Color	Black
Rotation Angle on Bracket	±5° (lockable)
Tilt Angle on Bracket	±3°
Degree of Protection	NEMA 4 / IP65
Temperature Range	-22 – 140 °F powered (-30 – 60 °C powered); 14 – 140 °F unpowered (-10 – 60 °C unpowered);
Humidity	0 – 95% non-condensing
Vibrations	< 2 G
Pollution on Front Screens	Max. 30%; Homogenous
Norm Conformity	2006 / 95 / EC: LVD; 2004 / 108 / EC: EMC; IEC 60825-1:2007; IEC 61000-6-2:2005; 2002 / 95 / EC: RoHS; IEC 60529:2001; IEC 60950-1:2005; IEC 61000-6-3:2006

PRODUCT SERIES



10LZRH100
LZR-H100 sensor



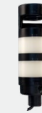
10BR3X
BR3-X logic module



10LBA
LZR mounting bracket accessory



10REMOTE
BEA universal remote control



10LIGHT-XX
LED signal modular light series



10LZBRGATE1200
L & Z Mounting bracket



10GL1200R
1200 lb / Front mount for sliding gate



10GL1200SR
1200 lb / Side mount for swinging door / gate



10PSMDR2024
100 – 240 VAC, 24 VDC power supply



10PSST242
242VDC 2A Plug-in Power supply

DISCLAIMER Information is supplied upon the condition that the persons receiving it will make their own determination as to its suitability for their purposes prior to use. In no event will BEA be responsible for damages of any nature whatsoever resulting from the use of or reliance upon information from this document or the products to which the information refers. BEA has the right without liability to change descriptions and specifications at any time.

WWW.BEASENSORS.COM



BEA AMERICAS / RIDC Park West / 100 Enterprise Drive / Pittsburgh, PA
T 1-800-523-2462 / F 1-888-523-2462 / E info-us@BEAsensors.com

A Halma company