

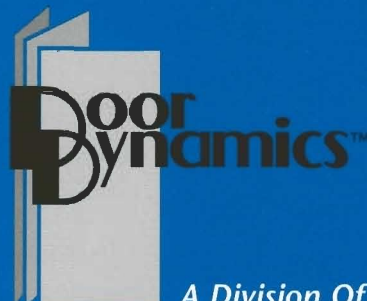
# KWIK-OP<sup>®</sup> 600 postal

## Automatic Door Openers

Specifications Format and Drawings for  
New and Retrofit Installations in Customer  
Service and Major 24 Hour Postal Facilities



POSTAL  
SERVICE  
APPROVED  
SINCE 1979



*A Division Of*

**CHASE Industries Inc.**

# INDEX

- 1** Exclusive Features
- 2** Parts List
- 3** Specifications (Formats)
- 7** Installation Details
  - 7 Plumbing And Electrical Layout
  - 8 Air Line Connectors
  - 9 Control Box Orientation
  - 10 Pipe Bollard Location
  - 11 Fail Secure Connections
  - 12 Fire Alarm Connections
- 13** Worksheet (Scope Of Work)
- 14** Worksheets (Traffic Pattern)
  - 14-35 USPS Traffic Pattern Drawings I-II
- 36** Mounting Selection Guide
- 37** Warranty
- 39** References
- 40** Installations

## KWIK-OP 600 Postal Exclusive Features For USPS Approved Automatic Door Opener/Closer System

The Kwik-Op 600 was originally designed specifically for Postal Service applications. Its simple, reliable push-to-open design is ideally suited for heavy postal traffic, yet allows the door to swing freely. It is easily installed on the door header and does not attach to the door, making it very attractive

in new or retrofit applications.

The Kwik-Op 600 is approved for use in 11 USPS Traffic Patterns, including major 24 hour facilities specified for use in all U.S. Postal construction project customer service facilities.

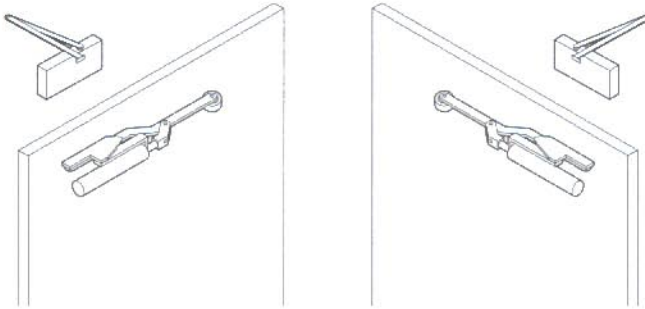
### Simple design, simple installation in new or retrofit installations.

#### Closer

*LCN Door Closer provides reliable closure and resists flying open.*

#### Opener

*Kwik-Op Opener features pneumatic actuator with only four moving parts. May be mounted on header on either push or swing side.*



#### Controls

*All electronics, valves, etc. are housed in a single enclosure which can be mounted up to 25' from the doorway.*

### Exclusive Features:

- Opens automatically or manually.
- Install on flush or center hung doors.
- For new or retrofit applications.
- Suits two- or one-way traffic patterns.
- Near zero maintenance.
- Easy installation.
- Designed for 1000 cycles a day.
- Operates door panels up to 600 lbs.
- 5 year limited warranty.
- Only four moving parts.

### A Variety Of Activating Systems

- Touchless hand activator.
- Motion detectors.
- Presence sensors for safety zones.
- Push buttons.
- Ceiling switches.
- Security cardex or digital control.
- Hold-open switch, wall mounted.
- Pencil beam activator.
- Explosion proof activators.
- Radio controlled units.
- Automated panic hardware and deadbolts.

### Kwik-Op Control Box

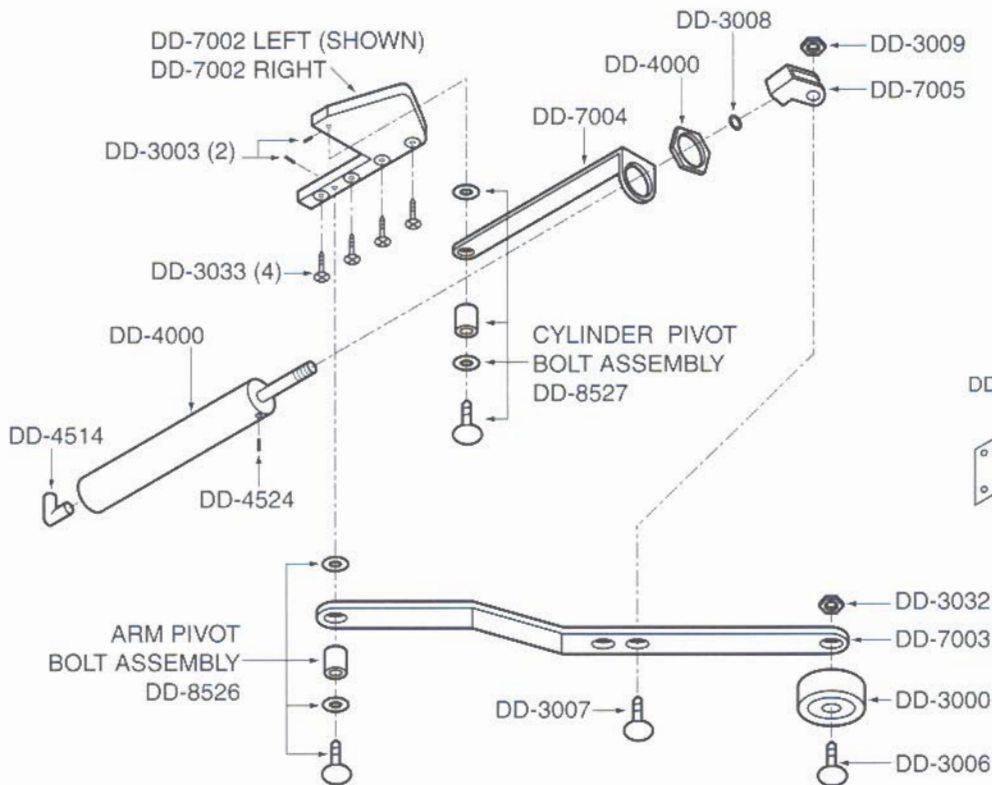
- Controls all functions.
- Installs up to 25 feet from door.
- Plugs into 110V outlet.
- One air line connects box to opener.
- Adjustable opening speed: 1-5 seconds.
- Supports security and fire features.
- Hold-open time 2 to 99 seconds.
- On/Off switch.
- Hold-open switch.

Basic model includes all equipment less electronic activating system. For further information call toll free: 1-800-305-6736.

# 2

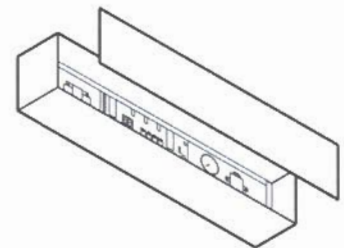
## Kwik-Op 600 Postal Opener Assembly and Parts List

### Exploded View

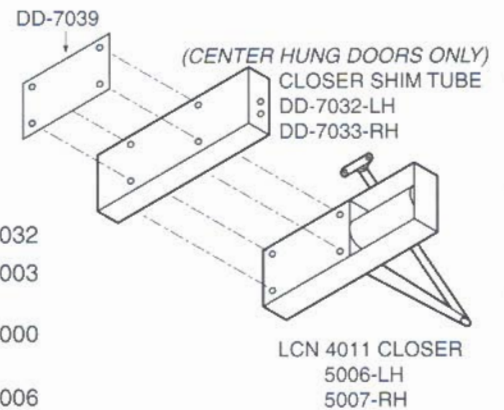


### Control Box

DD-8500



### Closer



### Parts List

#### Opener Parts

- DD 4000 Cylinder, 2" x 8" stainless steel
- DD 7002 T-bracket, right hand
- DD 7002 T-bracket, left hand
- DD 7003 Arm
- DD 7004 Cylinder bracket
- DD 7005 Clevis
- DD 3000 Wheel
- DD 8526 Arm bolt assembly with bearings
- DD 8527 Cylinder bolt assembly with bearings
- DD 3006 5/16-24 x 1-3/4" hex head cap screw
- DD 3007 5/16-24 x 1-1/2" hex head cap screw
- DD 3008 Jamnut 1/2" x 20
- DD 3003 1/4 - 20 set screw
- DD 3009 5/16 x 24 thin Nyloc nut
- DD 3033 1/4 x 20 x 7/8" flat head phillips

#### DD 7039 Backer plate

DD 4514 Swivel 90 degree elbow

DD 4524 Vent plug

DD 3032 5/16 Nyloc nut

#### Closer Parts

DD 5007RH LCN 4011 Closer, right hand

DD 5006LH LCN 4011 Closer, left hand

DD 7033 Closer shim tube, right hand

DD 7032 Closer shim tube, left hand

#### Opener Assemblies

DD 8505 Left hand opener, complete assembly

DD 8506 Right hand opener, complete assembly

DD 8500 Control box

## Section 08310 Swinging Automatic Door Openers

### Section 08711 Controlling Hardware

#### Part 1: General

##### 1.1 Manufacturer

A. The swinging door automatic openers specified are heavy-duty industrial type, capable of opening free swinging door panels weighing up to 600 pounds, as manufactured by Chase Industries, Inc., 10021 Commerce Park Drive, Cincinnati, OH 45246, telephone no: 1-800-305-6736. The manufacturer's name and catalog identification are provided in order to indicate the quality, design and function of operators desired, other manufacturer's product having equal quality, design and function criteria will be acceptable provided the products meet the approval of the contracting officer.

##### 1.2 Operation

- A. Automatic door opening systems will not be damaged if activated when doors are locked or blocked in the closed or open position.
- B. In case of emergency or power failure the doors shall operate independent of the pneumatic operator. Manual door action is to be controlled by the normal operation of the door closer.
- C. Automatic door opening system shall allow for the future addition of a protection zone by adding the proper sensors. The control box and basic unit will not require change.
- D. Automatic door opening system shall be adaptable to one-way, two-way and two-way bi-parting traffic. Simultaneous operation of double doors is standard.
- E. Field adjustments shall be limited to:  
The Closer: Range setting, back check, power range and speed.  
The Opener: Open/Close forces, opening speed, door hold-open time. No other adjustments shall be required in the field.
- F. No air consumption is required to hold doors in the open position.

#### Part 2: Products

##### 2.1 Automatic Door Operators

- A. Automatic door operators shall be pneumatic powered without gears, clutches or motors and not attached to the doors.
- B. Automatic door operators shall be mounted on the door frame head, not to the building wall.
- C. Automatic door operators shall deliver opening force by an actuator arm and roller wheel. Opening force shall be adjustable and capable of opening free swinging door panels weighing up to 600 lbs.

##### 2.2 Motion Detectors

- A. Door opening action is to be accomplished by electronic motion detectors.

##### 2.3 Control Unit

- A. Control Unit shall plug into standard 110VAC outlet and include on-off switch and hold-open switch. All parts are to be furnished to connect to air source.
- B. The Control Unit must be approved by Underwriters Laboratory per Specifications UL 508.
- C. The Control Unit is to be of a micro-processor based design.

# 4

## 2.4 KWIK-OP 600 Model

- A. Model DD 2100 – Operator for one single door, one way or two way traffic.
- B. Model DD 2101 – Operator for two single doors, simultaneous opening for two single doors in vestibule.
- C. Model DD 2200 – Operators for double doors, one way or two way traffic.
- D. Model DD 2201 – Operators for two pairs of double doors, simultaneous opening for two pairs of doors in vestibule.

## 2.5 Closers (All Models)

- A. Door closing action shall be accomplished by the installation of an LCN 4000 series door closer, or its acceptable equivalent equipped with adjustable force, back and latch check action and range of openings.

## 2.6 Activator Choices

- A. Activator shall plug into control unit and include a pre-wired pigtail.
- B. D-7 Microwave Motion Detector DD 6006 or DD 6007 – detects motion coming and going. (Used to activate doors. One required per opening or one entrance door of a vestibule when model 2101 or 2201 are used.)
- C. D-14-1 Microwave Ultrasonic Presence Sensor, DD 6027 (Prohibits doors from opening or closing while objects are in swing path of doors. One required per opening or one on exiting door in a vestibule when model 2101 or 2201 are used.)
- D. Hold-Open Switch, DD 8515 – key activated, wall mount, surface or flush. For use during extremely high traffic time periods.
- E. On-Off Switch, DD 8529 – key activated, wall mount, surface or flush.

## 2.7 Fasteners

- A. Plated steel fasteners shall be used in fabrication and mounting of all parts.

## 2.8 Door Stops

- A. Floor mounted door stops for each door panels, baked on enamel finish in safety yellow with neoprene pad and required fasteners.
- B. Frame head mounted stops for each opening, baked on enamel finish in safety yellow with neoprene pad and required fasteners.

## 2.9 Center Hung Doors

- A. Door operator manufacturer shall provide a shim kit(s) for the closer.

## 3.0 Warranty

- A. The automatic door actuators, control units and door closers shall carry a limited five year warranty.
- B. The electronic activators shall carry a minimum one year warranty or as provided by their manufacturer.
- C. The air compressor(s) shall carry a minimum one year warranty or as provided by their manufacturer.

## 3.1 Service

- A. Factory shall maintain a toll free (800) telephone number, prominently displayed on the control box for factory-direct service or technical request from the user. Replacement parts for operators shall be available for next working day shipment.

### 3.2 Installation of Operators (By Others)

**A.** Templates shall be provided for installation of operator, closer and control unit.

**B.** Specific instructions shall be provided for installation of all equipment supplied. The units can be installed by a competent tradesman or maintenance person and do not require a factory authorized distributor for installation, maintenance or service.

**C.** Parts list and service/operational manual to be provided.

### 3.3 AIR REQUIREMENTS FOR AUTOMATIC DOOR OPERATORS

#### 3.3.1 General Air Compressor Information

**A.** Door Dynamics Kwik-Op 600 Automatic Door Operators are designed to operate on the facility's existing air compressors with no significant additional burden.

**B.** Facilities with existing air compressors: Refer to sections 3.3.2 and 3.3.3 for CFM calculations and proper air supply line sizing.

**C.** Facilities without compressors: Refer to sections 3.3.2 to 3.3.4 for compressors sized to supply up to four pairs of operators.

#### 3.3.2 Air Supply for Kwik-Op 600 Automatic Door Operators

**A.** Air compressor sizing: 100/125 PSI range with sufficient capacity to furnish volume as required: Air consumption is calculated based on one pair of doors cycling six times per minute at 70 PSI. The first pair of doors requires 1 CFM and for each additional pair add 0.9 CFM. (The cylinder requires 0.73 CFM per cycle.)

#### 3.3.3 Air Supply Lines and Fittings for Central Air Systems

**A.** Air drops are to be provided for each door location.

**B.** Air supply lines from compressor to each control unit shall be: 1/2" for 0-200 feet and 3/4" for 201-1000 feet. The terminus is to be reduced to 1/4" with 1/4" NPTF female fittings (plugged until final connection is made). Shut off valve can be included prior to reducing for service prior to operator control unit.

**C.** The terminus of airline should be within 3 feet of control box.

**D.** Purge air supply prior to connecting to control unit or warranty may be voided.

**E.** Recommended fittings: 1 shut off valve, 1 coalescing filter with auto drain.

**F.** Coalescing filter with service indicator is to be DD 4006 Watts F31-02AHS or equal.

**G.** Openers exposed to freezing temperatures to include an in-line dehydrfilter installed prior to control box (Wilkerson #5Z611 or equal.)

### 3.3.4 Recommendations for Stand-Alone Compressors

#### A. For Up To Four Single or Two Pairs of Doors

1. Rol Air HI51000L202 1-1/2 HP (110 VAC) Compressor (DD-8539) with automatic drain valve and a 10 gallon tank. To be used with four singles or two double Kwik-Op 600 series operators. Suitable for floor or wall mounting (Four cylinders maximum).

2. Wall mounting bracket for Rol Air 10 Gallon portable air compressors.

#### B. For Up To Four Double Doors

1. Rol Air HI52000L202 1-1/2 HP (110 VAC) Compressor (DD-8540) with automatic drain valve and a 20 gallon tank. To be used with up to four double Kwik-Op 600 series operators. Suitable for floor or wall mounting. (eight cylinders maximum).

2. Wall mounting bracket for Rol Air 20 Gallon portable air compressors.

**Note:** Above compressors can be located at or near each door opening or inside vestibule, when wall mounted. If openers are located more than 100 feet from compressors, please contact Chase Industries, Inc. for instructions.

### 3.3.5 Electrical Requirements for Stand Alone Compressors

A. Local codes prevail.

B. Installation by others.

C. 110 VAC.

D. 1 @ 1-1/2 HP - 15.0 AMP,

1 @ 1-1/2 HP - 30.0 AMP

### 3.4 ELECTRICAL SUPPLY FOR AUTOMATIC DOOR OPERATORS FURNISHED BY USPS OR INCLUDED IN ELECTRICAL SECTION.

**Note:** Electrical service to each door opening may be existing.

#### 3.4.1 Electrical Section Shall Include

A. Junction box (4") 110 VAC, 60 HZ, 15.0 AMP outlet to be furnished at each control unit location, within 6' of control box.

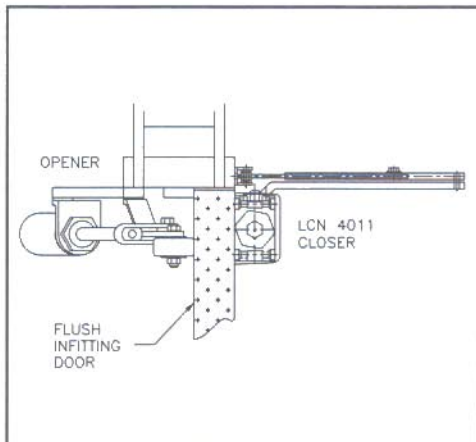
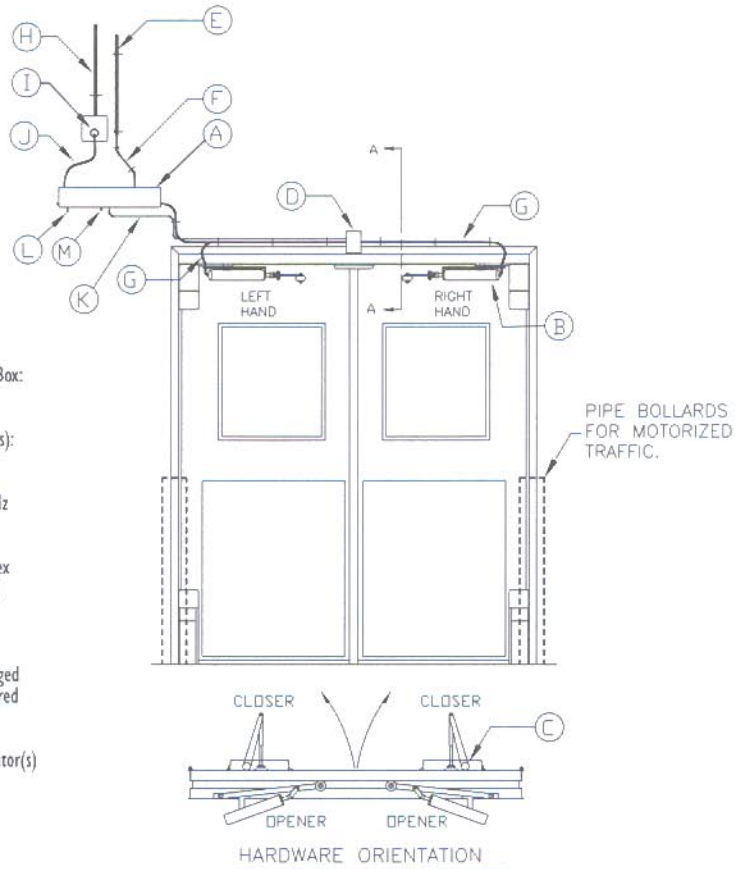
B. Low voltage wiring to be a minimum of 18 gauge wire from activating switches or devices to control box. All wire junctions and terminations per local code.



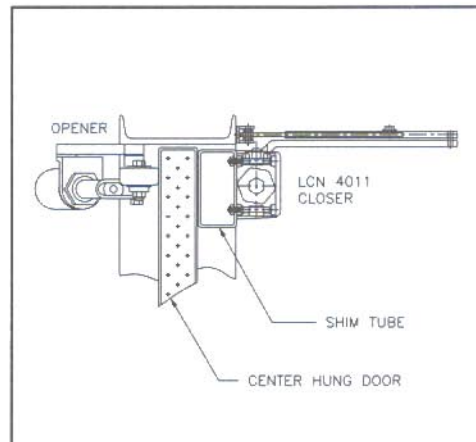
## General Arrangement Door Dynamics Kwik-Op 600 Postal Pneumatic Door Opener

Includes: Controls, Actuators, Closer Components,  
Air Line Plumbing, Electrical Wiring Layout and Install Templates

- A** Control Box:  
Surface mounted (can be mounted in remote location)
- B** Pneumatic Door Actuator (opener)
- C** Heavy Duty LCN Closer
- D** Motion Detector, or Other Activator (order separately)
- E** Air Line From Compressor with 1/4" NPT Fitting, Hidden or Surface Mount (by others)
- F** 1/4" Flex Air Line to Control Box: hidden or surface mount
- G** 1/4" Flex Air Line to Actuator(s): surface mount
- H** Electrical Source: 110 VAC/60 Hz (by others)
- I** Electrical Junction Box W/Duplex Outlet (or as required by local code) Flush or Surface Mount (by others)
- J** 3 Prong 110V Plug Cord, Plugged Into Junction Box (or as required by local code)
- K** Low Voltage Wiring From Activator(s) Plugged Into Control Box
- L** On/Off Switch
- M** Hold-Open Switch



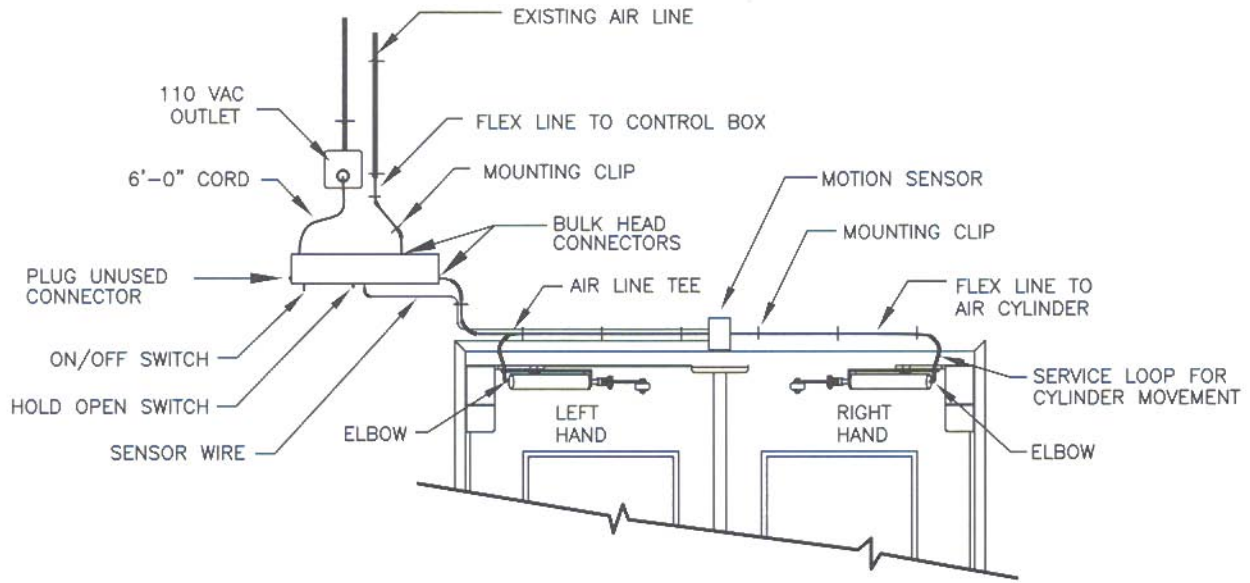
Flush Infitting



Center Hung

## Air Line Connection for Exposed/Industrial Applications

### For Kwik-Op 600 Postal Opener - SINGLE SET OF DOORS

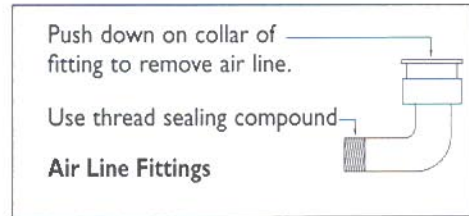


#### Basic Unit Includes The Following Connection Hardware:

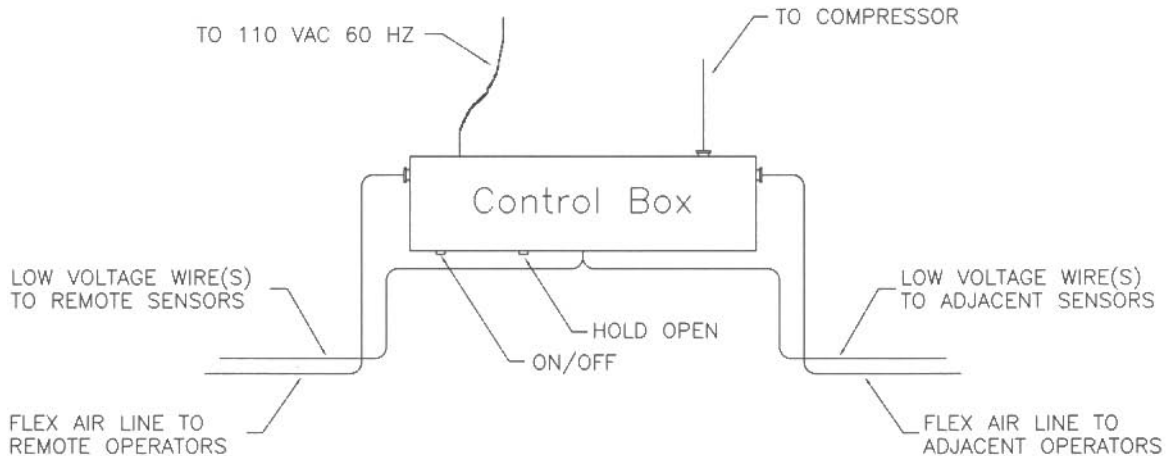
- 25' of 1/4" Air Line
- 10 Surface Mounting Clips
- 25' of Activator Cord for sensors (where applicable)

Control box can be mounted to side of opening and no more than 25' away. (Consult factory for longer remote distances.)

If plumbing and wiring are exposed, lay out the mounting clips in a neat pattern, and run both the air lines and sensor wire together under the clips.



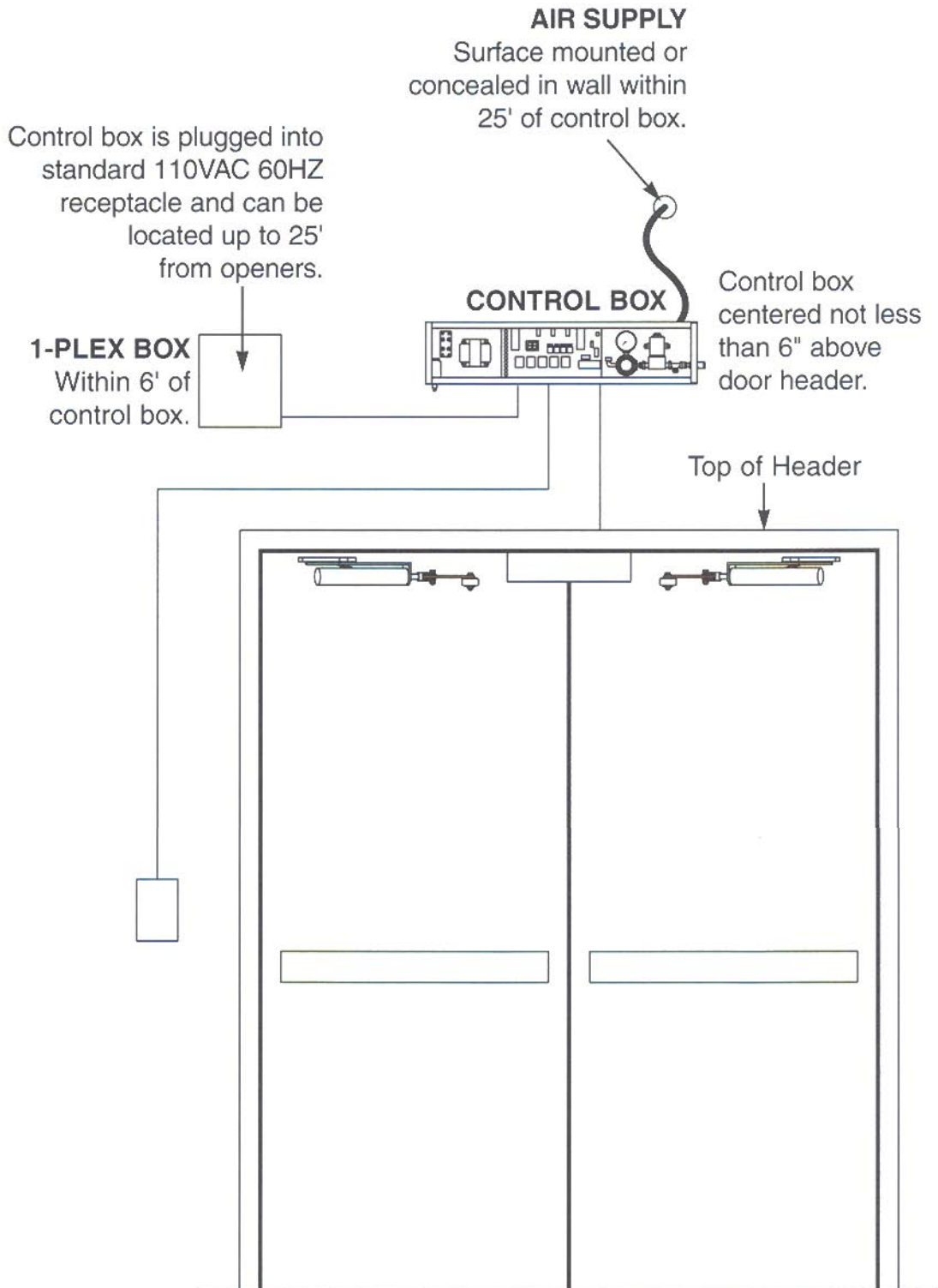
### For Kwik-Op 600 Postal Opener - DOUBLE SET OF DOORS



# 9

## Recommended Control Box Orientation

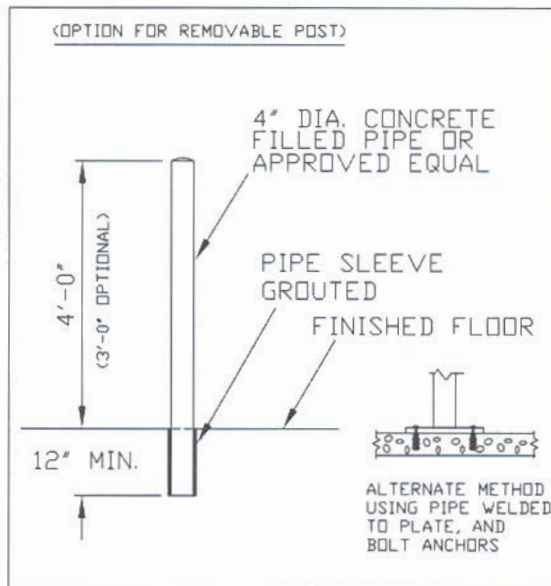
For Kwik-Op 600 Postal Opener



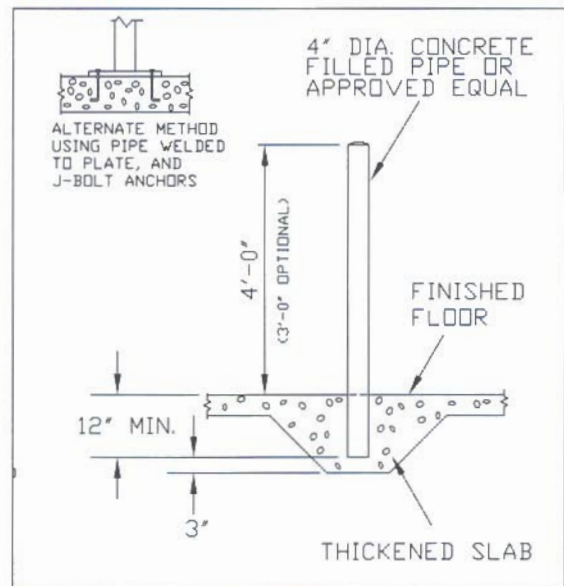
## 4' Bollard/Guard Post Location For Motorized Equipment

For Kwik-Op 600 Postal Opener

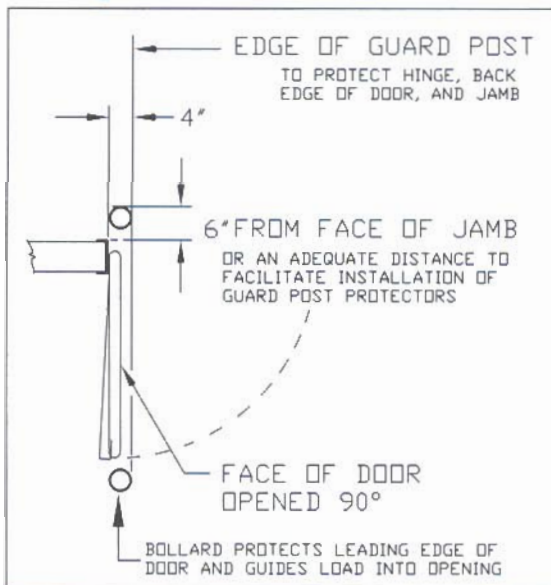
### Interior



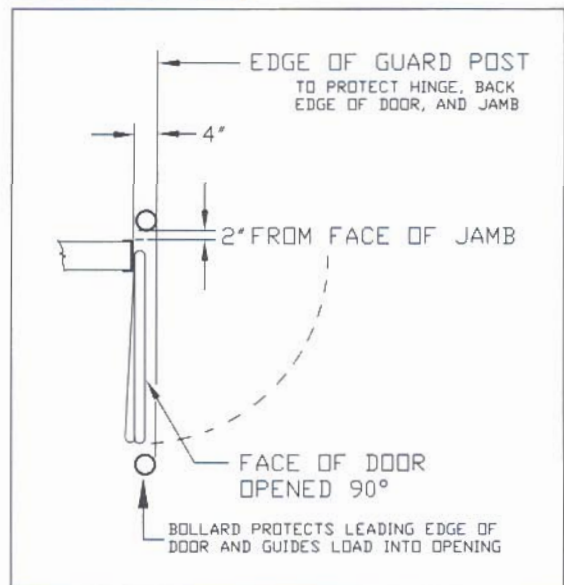
### Exterior



### Existing Construction



### New Construction



## Fail-Secure Connections

### Exterior Single Door With Electric Striker

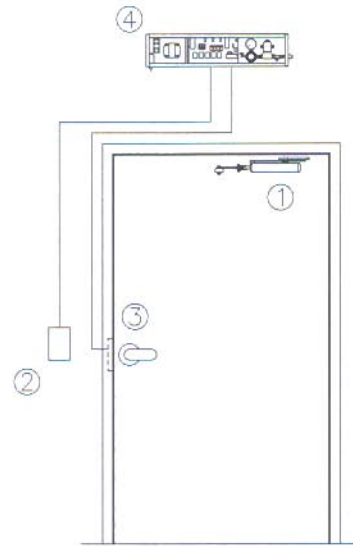
#### Electrical Specifications:

- Power consumption 110VAC 60 Hz, Maximum line current draw 1.0 Amp.
- Inputs normally open dry contacts, contact requirements 5VDC 15 MA minimum..
- Outputs are 24VAC, total connected loads 30VA.

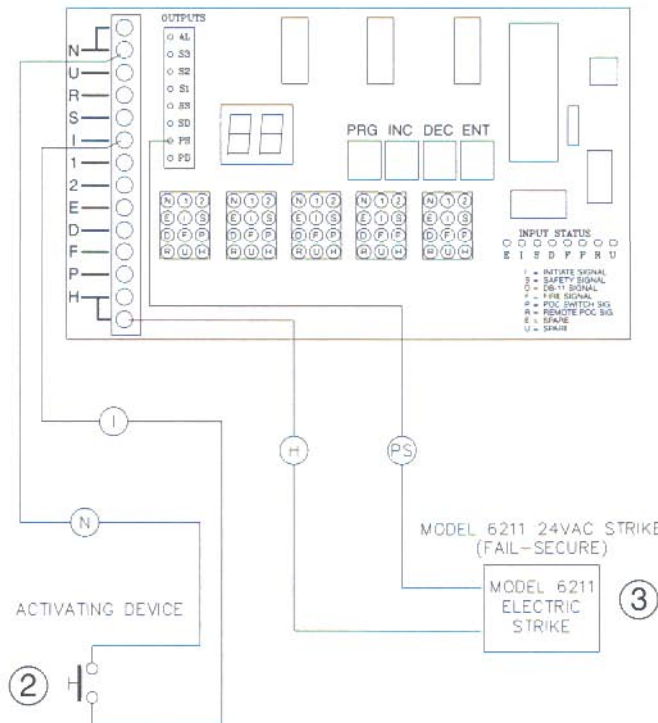
#### General Arrangements:

Item	Qty	Description
1	1	Kwik-Op 600 Pneumatic Door Opener
2	1	Activator Device
3	1	Electronic Strike
4	1	Control Box

#### General Arrangement



#### Connection Schematic for Control Board



#### Standard Parameter Settings:

- P1=5
- P2=1
- P3=4
- P4=5
- P5=1
- P6=3
- P7=5
- P8=0.2

# 12

## Fire Alarm Connections

### Twin Interior Doors With Magnetic Locks

#### Electrical Specifications:

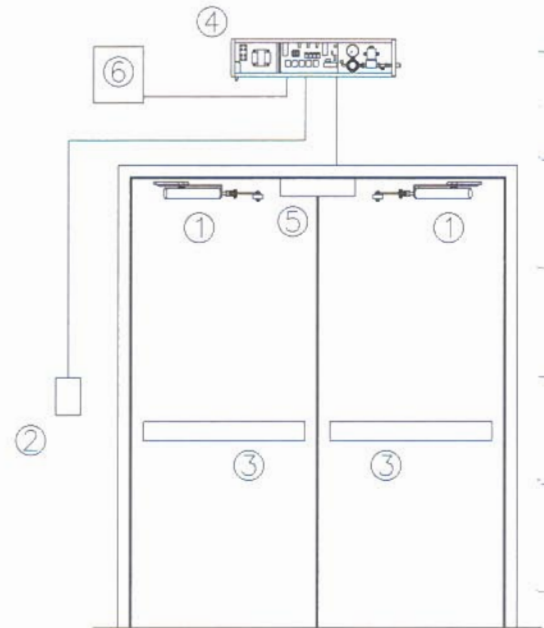
- Power consumption 110VAC, 60 Hz, Maximum line current draw 1.0 Amp.
- Inputs normally open dry contacts, contact requirements 5VDC 15 MA minimum.
- Outputs are 24VAC, total connected loads 30VA.

#### General Arrangements:

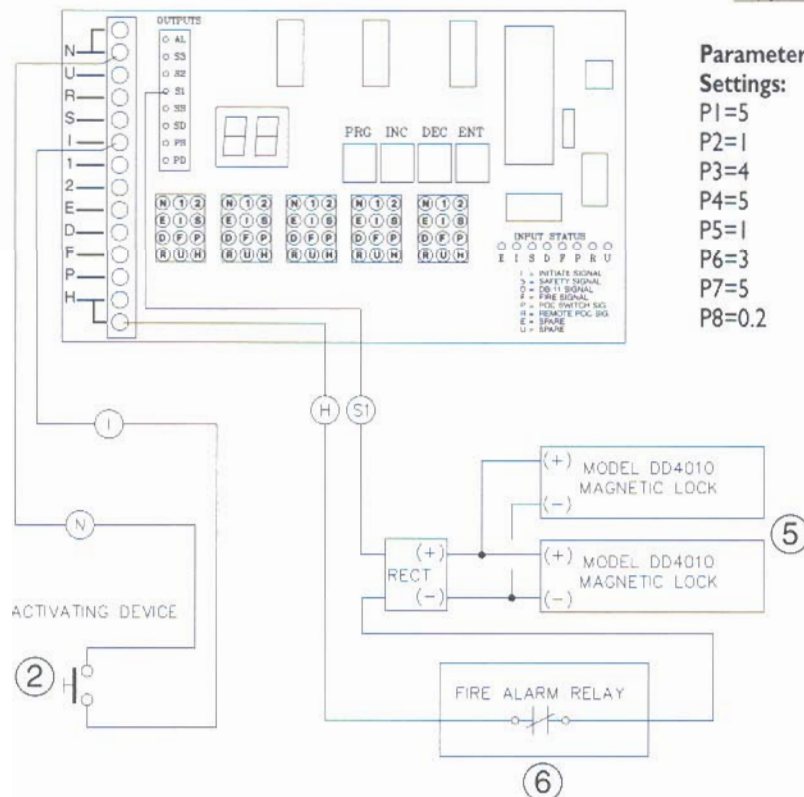
Item	Qty	Description
1	2	Kwik-Op 600 Pneumatic Door Opener
2	1	Activator Device
3	2	Push Bars
4	1	Control Box
5	1	Von Duprin Model DD4010 Double Mag Lock
6	1	Fire Alarm Relay

Note: All Von Duprin items to be purchased from local door hardware vendor.

#### General Arrangement



#### Connection Schematic for Control Board



## New Construction or Retrofitting Existing Major Facilities and Customer Service Facilities

### Recommended USPS Specifications and Format for Door Dynamics Kwik-Op 600 Automatic Openers

Door Dynamics™ and Kwik-Op® are listed under USPS Master Specifications, Sections 08711 and 08310, Issued 4/30/1997.

**Scope of Work:**

Reference: US Postal Service, 08720 - Automatic Door Operators Specifies Door Dynamics

**1 Door Openings**

**Number of Door Openings**

Single Door \_\_\_\_\_

Double Doors \_\_\_\_\_

**Door Type**

Center Hung \_\_\_\_\_

Flush Mount \_\_\_\_\_

**Door Model**

Manufacturer \_\_\_\_\_

Model \_\_\_\_\_

**Door Opening Sizes:**

Single Doors: Height \_\_\_\_\_ in; Width \_\_\_\_\_ in.

Double Doors: Height \_\_\_\_\_ in; Width \_\_\_\_\_ in.

**Reveal/Offset (Distance from door face to face of door jamb):**

Swing Side \_\_\_\_\_

Approach Side \_\_\_\_\_

**2 Install Door Dynamics Kwik-Op 600 Automatic Openers or Approved Equal on Vestibule or Door # \_\_\_\_\_ Thru \_\_\_\_\_ with the Following:**

Quantity	Model	USPS Traffic Pattern (drawing 1-12)
_____	_____	_____
_____	_____	_____
_____	_____	_____

Offers to furnish an "equal" product, in accordance with the Brand Name or Equal provision of this solicitation, must provide the following information for the offered product:

**Item Number** \_\_\_\_\_

**Product Name** \_\_\_\_\_

**Product Make, Model** \_\_\_\_\_

**Electromechanical** \_\_\_\_\_

**Pneumatic** \_\_\_\_\_

**Manufacturer's Name** \_\_\_\_\_

**Street** \_\_\_\_\_

**City** \_\_\_\_\_

**State, Zip** \_\_\_\_\_

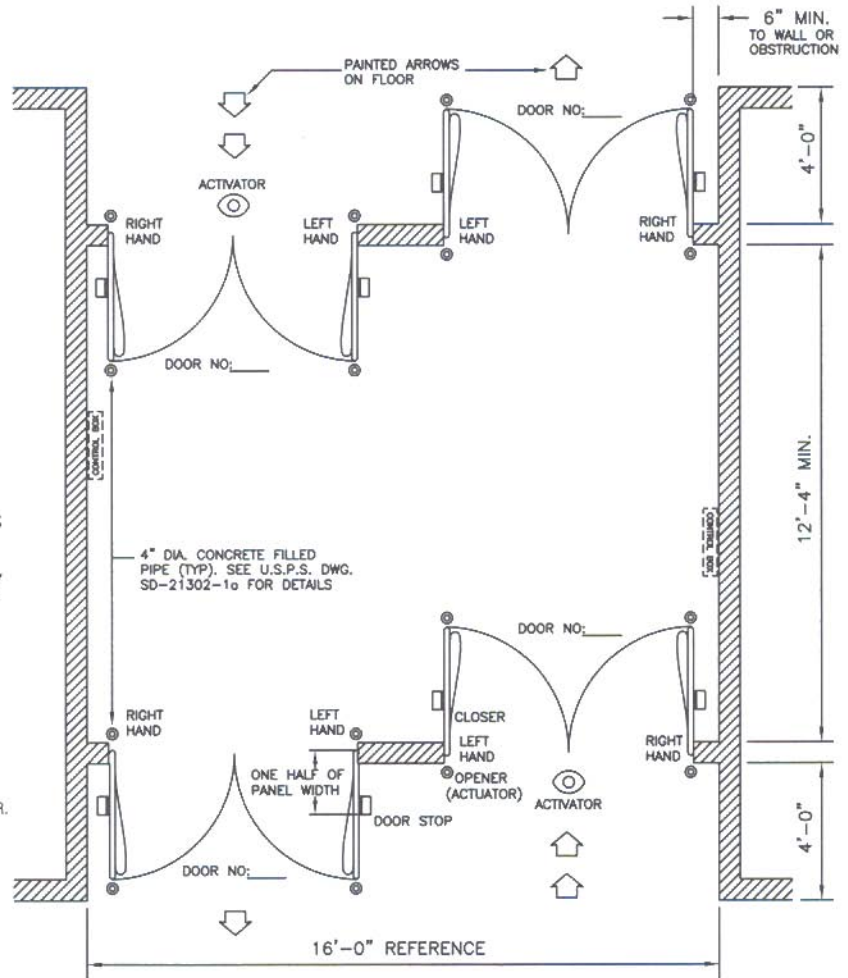
- 3** USPS will provide 110 VAC/60HZ power to each control box location (see electrical section).
- 4** USPS will provide air and air lines to each door. \_\_\_\_\_ Yes \_\_\_\_\_ No (If no, see #5 below).
- 5** Door operator manufacturer to provide air compressor and plumbing. \_\_\_\_\_ Yes \_\_\_\_\_ No
- 6** The door operator manufacturer will provide all necessary hardware, including appropriate shims, for the installation of the closure and the door operator when converting from flush infitting doors to center hung doors.
- 7** When automating existing cam-lift center hung doors, the door operator manufacturer is to furnish no-rise hardware for conversion of doors to no-rise.

## Traffic Pattern Number USPS-1 (Two Vestibules) – One Way Traffic (4 panels open simultaneously)

Typical Platform Layout For Automatic Door Devices Used With Metal Solid Doors – Flush Or Center Hung (as shown)

2- Model DD-2201  All four panels to open simultaneously

OPTIONAL AIR COMPRESSOR. RECOMMENDED LOCATION INSIDE BUILDING



### Type of Application

- Carrier     Mailing     Center Hung Doors     Flush Doors

### Specify Items Required

No.	Item	Type (If Applicable)
_____	Control	_____
_____	Actuator	_____
_____	Closers	_____
_____	Activators	_____
_____	Sensors	_____
_____	Compressor	_____

No.	Item	Type (If Applicable)
_____	Door Stops, Floor	_____
_____	Door Stops, Head	_____
_____	Other	_____
_____	Other	_____
_____	Other	_____

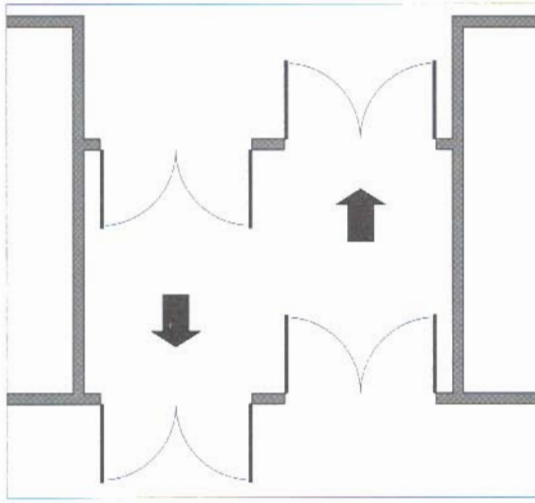
### Special Application

- Fail-Secure  
 Fire  
 Other

### Additional Information

\_\_\_\_\_  
 \_\_\_\_\_  
 \_\_\_\_\_





**Traffic Pattern USPS-1 (Two Vestibules)**

**Typical Architectural Specifications – Automatic Door Operators  
Carrier/Mailing Platform Vestibule**

**MANUFACTURER:**

Operators specified herein are Door Dynamics Kwik-Op 600 Pneumatic Door Openers manufactured by Chase Industries, Inc., 10021 Commerce Park Drive, Cincinnati, OH 45246, telephone no: 1-800-305-6736. The manufacturer's name and catalog identification are provided in order to indicate the quality, design and type of operators desired. Other manufacturers' products having equal quality and design will be acceptable, provided the products meet the approval of the owner or contracting officer.

Provide automatic door operators as required. Type shall be motion detector type.

Operators must be pneumatic heavy duty industrial type capable of opening door panels weighing up to 600 pounds. Operators shall mount to the frame head. Actuating controls shall be provided for each pair of single doors and each leaf shall open simultaneously and in synchronization. The closing cycle shall be spring operated.

Operators shall be designed to permit continuous manual operation without harming the operator. Operators shall be constructed so that if the doors are activated and then struck with a load, or activated when locked or blocked, no damage to opener mechanism or electronics can occur. Door opening speed shall be adjustable

from 1 to 5 seconds. The operators shall be equipped with a hold-open switch so that each door may be held in the open position. An adjustable checking action shall cushion the door motion on the final opening and closing stages. The openers shall not be attached to the door panel.

The automatic door actuator(s) and control unit(s) shall carry a limited 5 year warranty.

Actuating control must be by motion detector, located at impact side of doors. Provide circuitry to allow future addition of presence sensors on exit side of doors to prevent closing of doors against traffic. When the operator is reactivated it will recycle instantaneously to the full open position.

Door mechanism must meet OSHA and all fire code requirements for exits on openings where one-way traffic flow is to exterior of building.

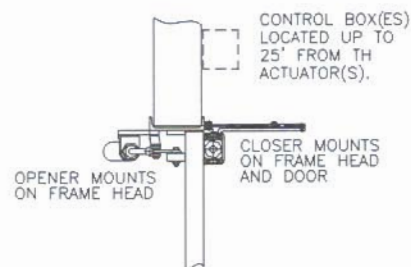
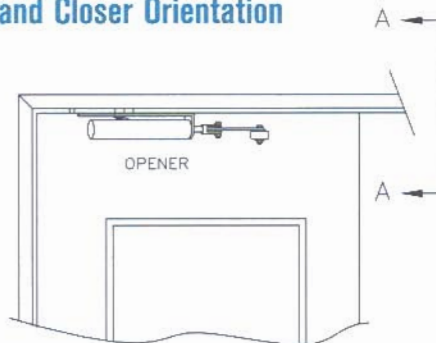
**PLUMBING SECTION**

Compressor specifications: See specifications or consult factory.

**ELECTRICAL SECTION**

Electrical supply for automatic door operators: Junction box (4") 110VAC, 60Hz, 15 AMP outlet to be furnished at each control unit location.

**Section A-A  
Opener and Closer Orientation**

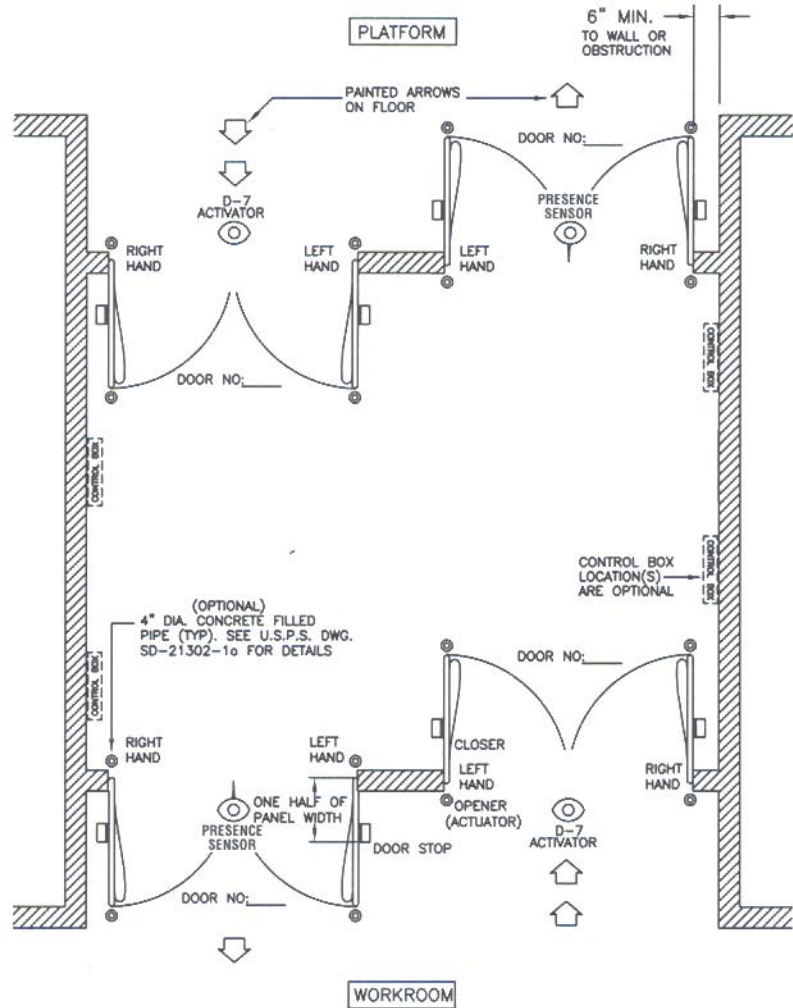


## Traffic Pattern Number USPS-2 (Two Vestibules) – One Way Traffic (Each pair opens independently)

Typical Vestibule  
Layout For  
Automatic Door  
Devices Used With  
Metal Solid Doors –  
Flush Or Center  
Hung (as shown)

4- Model  Each pair to  
DD-2200 operate  
independently

OPTIONAL AIR COMPRESSOR.  
RECOMMENDED LOCATION  
INSIDE BUILDING



### Type of Application

Carrier     Mailing     Center Hung Doors     Flush Doors

### Specify Items Required

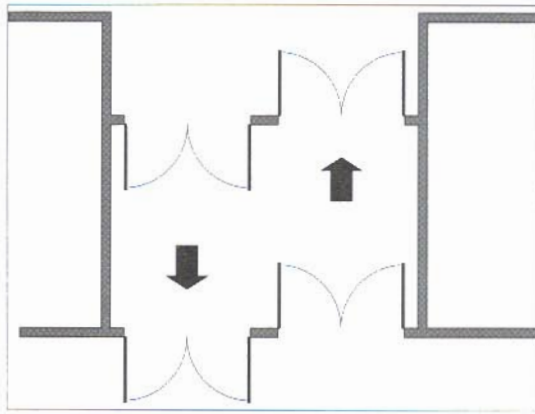
No.	Item	Type (If Applicable)	No.	Item	Type (If Applicable)
_____	Control	_____	_____	Door Stops, Floor	_____
_____	Actuator	_____	_____	Door Stops, Head	_____
_____	Closers	_____	_____	Other	_____
_____	Motion Detector	_____	_____	Other	_____
_____	Sensors	_____	_____	Other	_____
_____	Compressor	_____	_____	Other	_____

### Special Application

Fail-Secure  
 Fire  
 Other

### Additional Information

\_\_\_\_\_  
\_\_\_\_\_  
\_\_\_\_\_



**Traffic Pattern USPS-2 (Two Vestibules)**

**Typical Architectural Specifications – Automatic Door Operators  
Carrier/Mailing Platform Vestibule**

**MANUFACTURER:**

Operators specified herein are Door Dynamics Kwik-Op 600 Pneumatic Door Openers manufactured by Chase Industries, Inc., 10021 Commerce Park Drive, Cincinnati, OH 45246, telephone no: 1-800-305-6736. The manufacturer's name and catalog identification are provided in order to indicate the quality, design and type of operators desired. Other manufacturers' products having equal quality and design will be acceptable, provided the products meet the approval of the owner or contracting officer.

Provide automatic door operators as required. Type shall be motion detector type.

Operators must be pneumatic heavy duty industrial type capable of opening door panels weighing up to 600 pounds. Operators shall mount to the frame head. Actuating controls shall be provided for each single door, and each leaf shall open simultaneously and in synchronization. The closing cycle shall be spring operated.

Operators shall be designed to permit continuous manual operation without harming the operator. Operators shall be constructed so that if the doors are activated and then struck with a load, or activated when locked or blocked, no damage to opener mechanism or electronics can occur. Door opening speed shall be adjustable from 1 to 5 seconds. The operators shall be equipped with a hold-open switch so that each door may be held in the open position. An adjustable checking

action shall cushion the door motion on the final opening and closing stages. The openers shall not be attached to the door panel.

The automatic door actuator(s) and control unit(s) shall carry a limited 5 year warranty.

Actuating control must be by motion detector, located at impact side of doors. Provide circuitry to allow future addition of presence sensors on exit side of doors to prevent closing of doors against traffic. When the operator is reactivated it will recycle instantaneously to the full open position.

Door mechanism must meet OSHA and all fire code requirements for exits on openings where one-way traffic flow is to exterior of building.

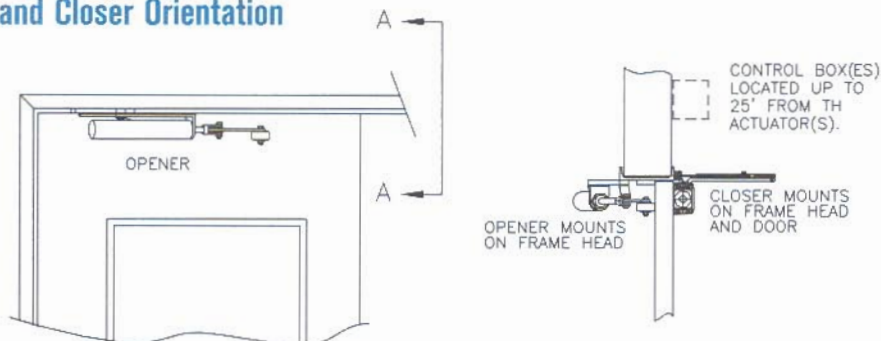
**PLUMBING SECTION**

Compressor specifications: See specifications or consult factory.

**ELECTRICAL SECTION**

Electrical supply for automatic door operators: Junction box (4") 110VAC, 60Hz, 15 AMP outlet to be furnished at each control unit location.

**Section A-A  
Opener and Closer Orientation**



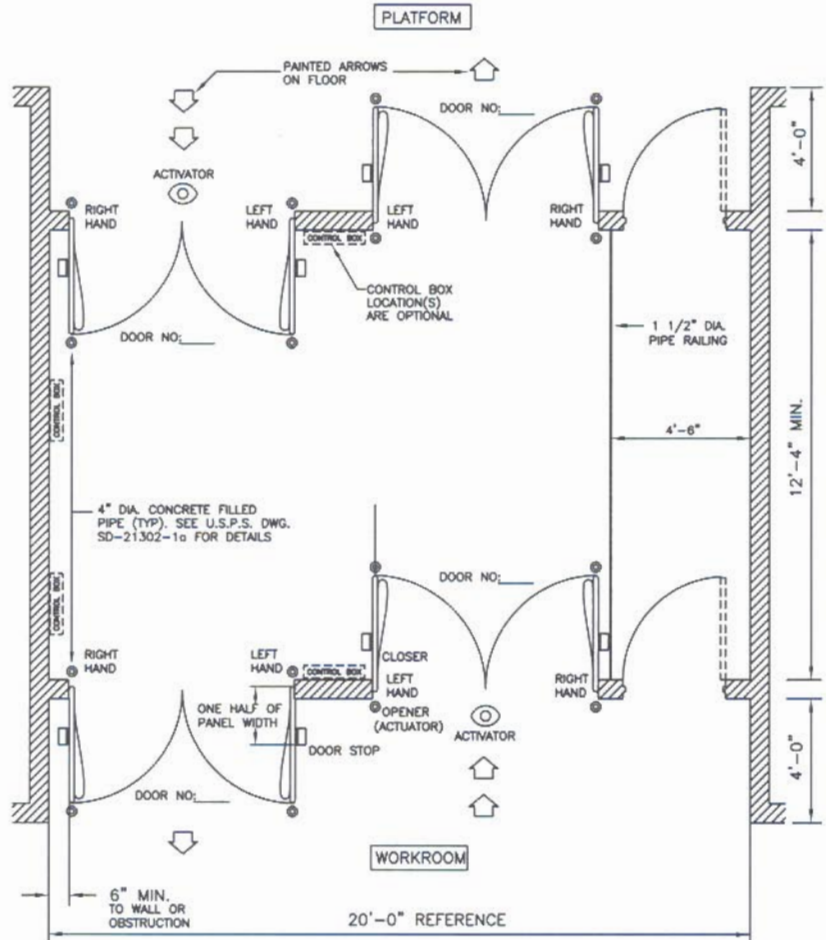
## Traffic Pattern Number USPS-3 (Two Vestibules) – One Way Traffic

Typical Platform Vestibule Layout For Automatic Door Devices Used With Metal Solid Doors – Flush Or Center Hung (as shown)

2- Model  DD-2201 All four panels to open simultaneously

4- Model #  DD-2200 Each pair to operate independently

OPTIONAL AIR COMPRESSOR. RECOMMENDED LOCATION INSIDE BUILDING



### Type of Application

- Carrier     Mailing     Center Hung Doors     Flush Doors

### Specify Items Required

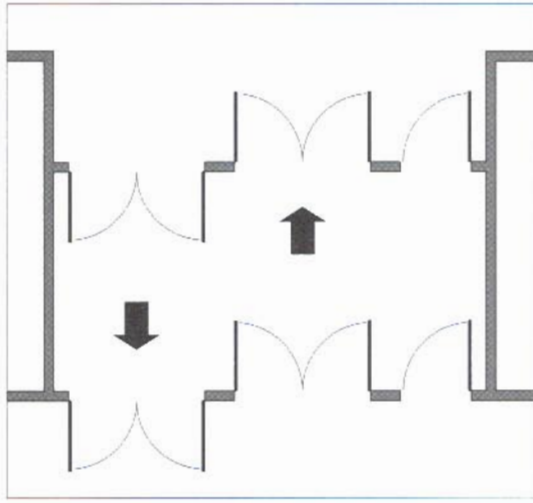
No.	Item	Type (If Applicable)	No.	Item	Type (If Applicable)
_____	Control	_____	_____	Door Stops, Floor	_____
_____	Actuator	_____	_____	Door Stops, Head	_____
_____	Closers	_____	_____	Other	_____
_____	Activator	_____	_____	Other	_____
_____	Sensors	_____	_____	Other	_____
_____	Compressor	_____	_____	Other	_____

### Special Application

- Fail-Secure  
 Fire  
 Other

### Additional Information

\_\_\_\_\_  
\_\_\_\_\_  
\_\_\_\_\_



**Traffic Pattern USPS-3 (Two Vestibules)**

**Typical Architectural Specifications – Automatic Door Operators  
Carrier/Mailing Platform Vestibule**

**MANUFACTURER:**

Operators specified herein are Door Dynamics Kwik-Op 600 Pneumatic Door Openers manufactured by Chase Industries, Inc., 10021 Commerce Park Drive, Cincinnati, OH 45246, telephone no: 1-800-305-6736. The manufacturer's name and catalog identification are provided in order to indicate the quality, design and type of operators desired. Other manufacturers' products having equal quality and design will be acceptable, provided the products meet the approval of the owner or contracting officer.

Provide automatic door operators as required. Type shall be motion detector type.

Operators must be pneumatic heavy duty industrial type capable of opening door panels weighing up to 600 pounds. Operators shall mount to the frame head. Actuating controls shall be provided for each pair of single doors and each leaf shall open simultaneously and in synchronization. The closing cycle shall be spring operated.

Operators shall be designed to permit continuous manual operation without harming the operator. Operators shall be constructed so that if the doors are activated and then struck with a load, or activated when locked or blocked, no damage to opener mechanism or electronics can occur. Door opening speed shall be adjustable

from 1 to 5 seconds. The operators shall be equipped with a hold-open switch so that each door may be held in the open position. An adjustable checking action shall cushion the door motion on the final opening and closing stages. The openers shall not be attached to the door panel.

The automatic door actuator(s) and control unit(s) shall carry a limited 5 year warranty.

Actuating control must be by motion detector, located at impact side of doors. Provide circuitry to allow future addition of presence sensors on exit side of doors to prevent closing of doors against traffic. When the operator is reactivated it will recycle instantaneously to the full open position.

Door mechanism must meet OSHA and all fire code requirements for exits on openings where one-way traffic flow is to exterior of building.

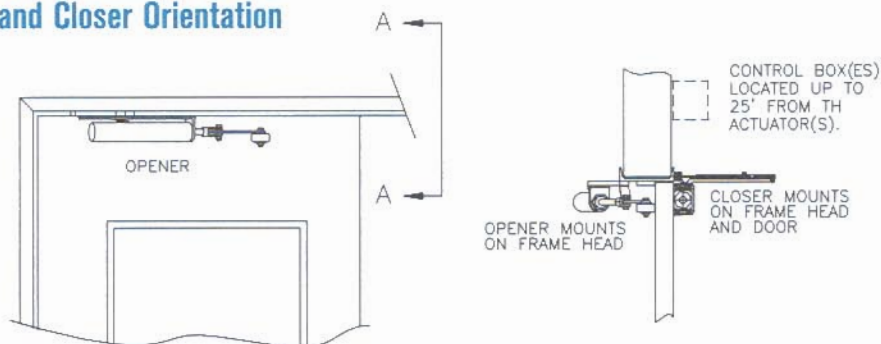
**PLUMBING SECTION**

Compressor specifications: See specifications or consult factory.

**ELECTRICAL SECTION**

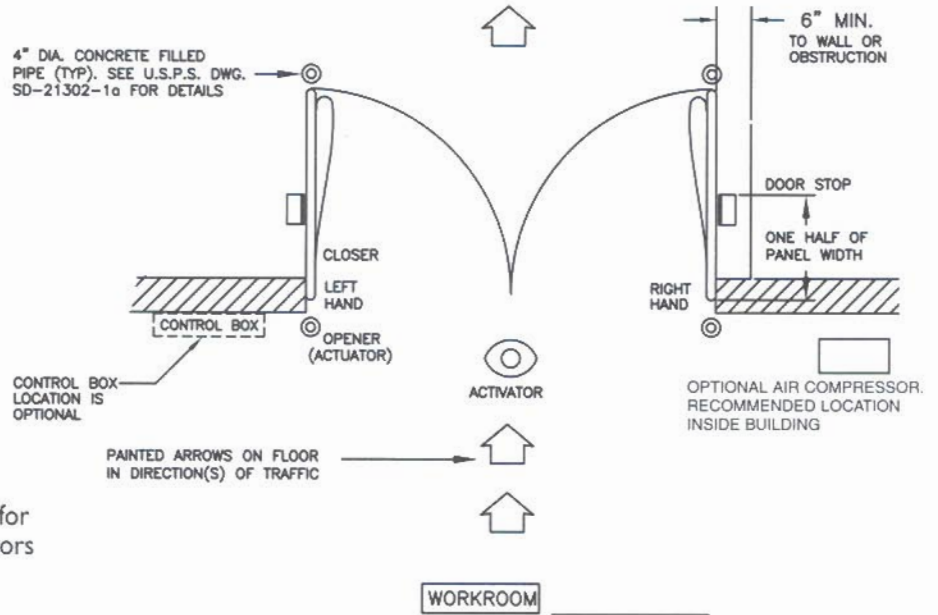
Electrical supply for automatic door operators: Junction box (4") 110VAC, 60Hz, 15 AMP outlet to be furnished at each control unit location.

**Section A-A  
Opener and Closer Orientation**

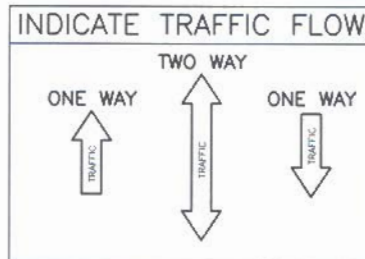


## Traffic Pattern Number USPS-4 (One Pair of Doors)

**Typical Workroom  
Layout For  
Automatic Door  
Devices Used With  
Metal Solid Doors –  
Flush Or Center  
Hung (as shown)**



1- Model  Required for  
DD-2200 pair of doors



### Traffic

One Way  Two Way

### Type of Application

Carrier  Mailing  Center Hung Doors  Flush Doors

### Specify Items Required

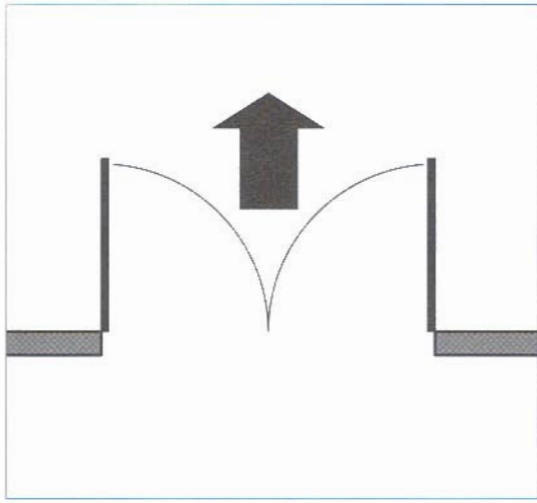
No.	Item	Type (If Applicable)	No.	Item	Type (If Applicable)
_____	Control	_____	_____	Door Stops, Floor	_____
_____	Actuator	_____	_____	Door Stops, Head	_____
_____	Closers	_____	_____	Other	_____
_____	Activator	_____	_____	Other	_____
_____	Sensors	_____	_____	Other	_____
_____	Compressor	_____	_____	Other	_____

### Special Application

Fail-Secure  
 Fire  
 Other

### Additional Information

\_\_\_\_\_  
\_\_\_\_\_  
\_\_\_\_\_



**Traffic Pattern USPS-4 (One Pair of Doors)**

**Typical Architectural Specifications – Automatic Door Operators  
Carrier/Mailing**

**MANUFACTURER:**

Operators specified herein are Door Dynamics "Kwik-Op" 600 Pneumatic Door Openers manufactured by Chase Industries, Inc. 10021 Commerce Park Drive, Cincinnati, OH 45246, tele. number 1-800-305-6736. The manufacturer's name and catalog identification are provided in order to indicate the quality, design and type of operators desired. Other manufacturer's products having equal quality and design will be acceptable provided the product meets the approval of the owner or contracting officer.

Provide automatic door operators as required. Type shall be motion detector type.

Operators must be pneumatic heavy duty industrial type capable of opening door panels weighing up to 600 pounds. Operators shall mount to the frame head. Actuating controls shall be provided for each pair of single doors and each leaf shall open simultaneously and in synchronization. The closing cycle shall be spring operated.

Operators shall be designed to permit continuous manual operation without harming the operator. Operators shall be constructed so that if the doors are activated and then struck with a load, or activated when locked or blocked, no damage to opener mechanism or electronics can occur. Door opening speed shall be adjustable

from 1 to 5 seconds. The operators shall be equipped with a hold-open switch so that each door may be held in the open position. An adjustable checking action shall cushion the door motion on the final opening and closing stages. The openers shall not be attached to the door panel.

The automatic door actuator(s) and control unit(s) shall carry a limited 5 year warranty.

Actuating control must be by motion detector, located at impact side of doors. Provide circuitry to allow future addition of presence sensors on exit side of doors to prevent closing of doors against traffic. When the operator is reactivated it will recycle instantaneously to the full open position.

Door mechanism must meet OSHA and all fire code requirements for exits on openings where one-way traffic flow is to exterior of building.

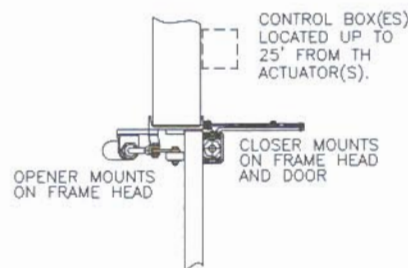
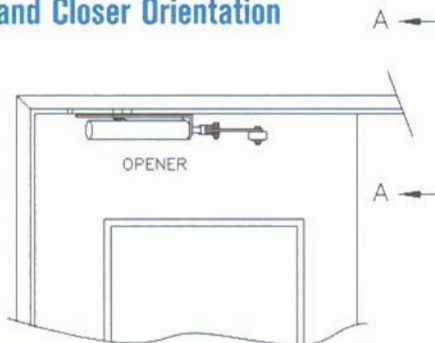
**PLUMBING SECTION**

Compressor specifications: See specifications or consult factory.

**ELECTRICAL SECTION**

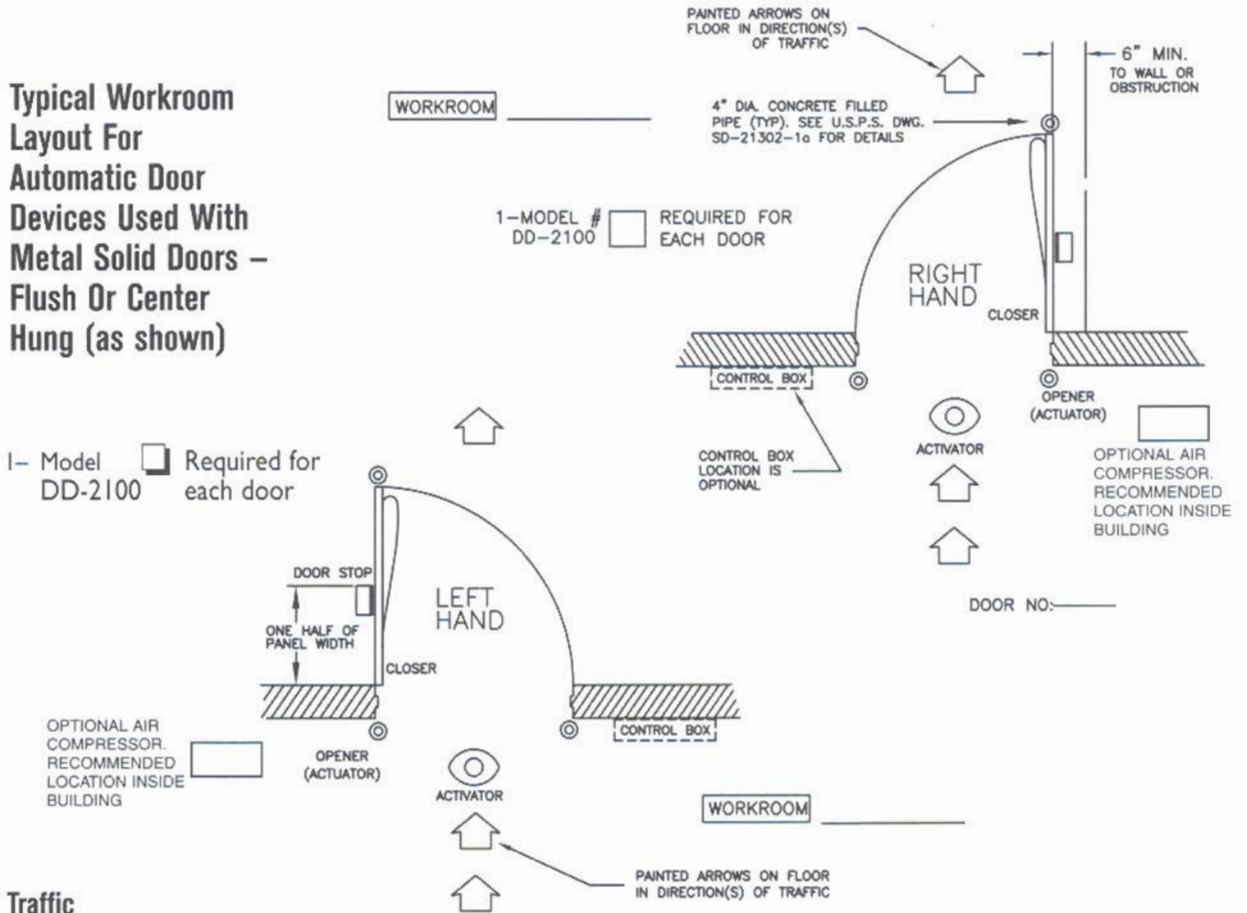
Electrical supply for automatic door operators: Junction box (4") 110VAC, 60HZ, 15 AMP outlet to be furnished at each control unit location.

**Section A-A  
Opener and Closer Orientation**



## Traffic Pattern Number USPS-5 (One Opening with Single Door)

Typical Workroom  
Layout For  
Automatic Door  
Devices Used With  
Metal Solid Doors –  
Flush Or Center  
Hung (as shown)



### Traffic

- One Way     Two Way

### Type of Application

- Carrier     Mailing     Center Hung Doors     Flush Doors

### Specify Items Required

No.	Item	Type (If Applicable)	No.	Item	Type (If Applicable)
_____	Control	_____	_____	Door Stops, Floor	_____
_____	Actuator	_____	_____	Door Stops, Head	_____
_____	Closers	_____	_____	Other	_____
_____	Activator	_____	_____	Other	_____
_____	Sensors	_____	_____	Other	_____
_____	Compressor	_____	_____		

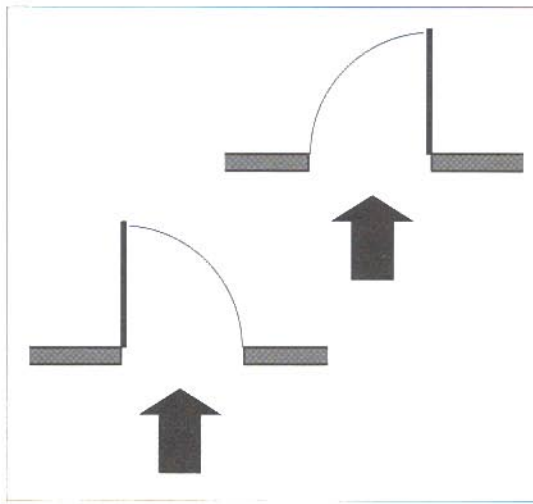
### Special Application

- Fail-Secure  
 Fire  
 Other

### Additional Information

\_\_\_\_\_  
\_\_\_\_\_  
\_\_\_\_\_





**Traffic Pattern USPS-5 (One Opening with Single Door)**

**Typical Architectural Specifications – Automatic Door Operators  
Carrier/Mailing**

**MANUFACTURER:**

Operators specified herein are Door Dynamics Kwik-Op 600 Pneumatic Door Openers manufactured by Chase Industries, Inc., 10021 Commerce Park Drive, Cincinnati, OH 45246, telephone no: 1-800-305-6736. The manufacturer's name and catalog identification are provided in order to indicate the quality, design and type of operators desired. Other manufacturers' products having equal quality and design will be acceptable, provided, the product meets the approval of the owner or contracting officer.

Provide automatic door operators as required. Type shall be motion detector type.

Operators must be pneumatic heavy duty industrial type capable of opening door panels weighing up to 600 pounds. Operators shall mount to the frame head. Actuating controls shall be provided for each single door and each leaf shall open simultaneously and in synchronization. The closing cycle shall be spring operated.

Operators shall be designed to permit continuous manual operation without harming the operator. Operators shall be constructed so that if the doors are activated and then struck with a load, or activated when locked or blocked, no damage to opener mechanism or electronics can occur. Door opening speed shall be adjustable

from 1 to 5 seconds. The operators shall be equipped with a hold-open switch so that each door may be held in the open position. An adjustable checking action shall cushion the door motion on the final opening and closing stages. The openers shall not be attached to the door panel.

The automatic door actuator(s) and control unit(s) shall carry a limited 5 year warranty.

Actuating control must be by motion detector, located at impact side of doors. Provide circuitry to allow future addition of presence sensors on exit side of doors to prevent closing of doors against traffic. When the operator is reactivated it will recycle instantaneously to the full open position.

Door mechanism must meet OSHA and all fire code requirements for exits on openings where one-way traffic flow is to exterior of building.

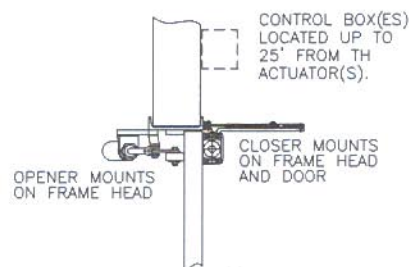
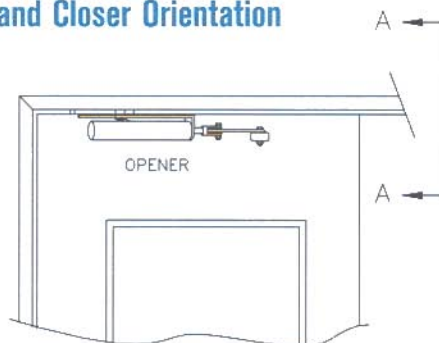
**PLUMBING SECTION**

Compressor specifications: See specifications or consult factory.

**ELECTRICAL SECTION**

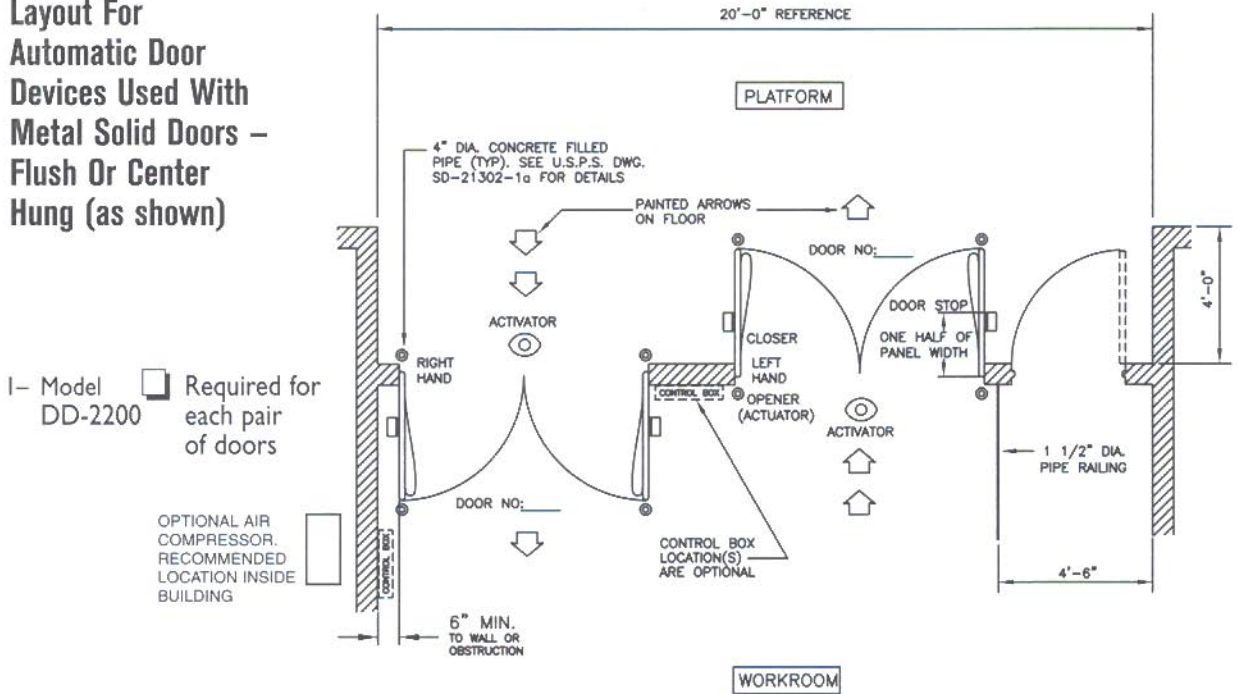
Electrical supply for automatic door operators: Junction box (4") 110 VAC, 60Hz, 15 AMP outlet to be furnished at each control unit location.

**Section A-A  
Opener and Closer Orientation**



## Traffic Pattern Number USPS-6 (Vestibule) – One Way Traffic

Typical Platform  
Layout For  
Automatic Door  
Devices Used With  
Metal Solid Doors –  
Flush Or Center  
Hung (as shown)



1- Model DD-2200  Required for each pair of doors

### Type of Application

- Carrier/Personnel     Mailing/Personnel     Center Hung Doors     Flush Doors

### Specify Items Required

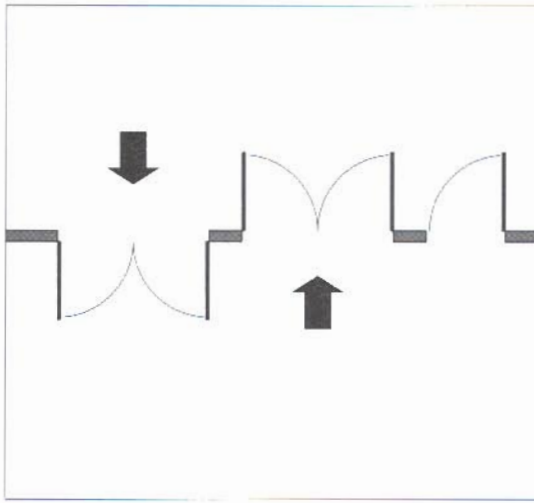
No.	Item	Type (If Applicable)	No.	Item	Type (If Applicable)
_____	Control	_____	_____	Door Stops, Floor	_____
_____	Actuator	_____	_____	Door Stops, Head	_____
_____	Closers	_____	_____	Other	_____
_____	Activator	_____	_____	Other	_____
_____	Sensors	_____	_____	Other	_____
_____	Compressor	_____	_____	Other	_____

### Special Application

- Fail-Secure  
 Fire  
 Other

### Additional Information

\_\_\_\_\_  
\_\_\_\_\_  
\_\_\_\_\_



**Traffic Pattern USPS-6 (One Opening with Single Door)**

**Typical Architectural Specifications – Automatic Door Operators Carrier/Mailing**

**MANUFACTURER:**

Operators specified herein are Door Dynamics Kwik-Op 600 Pneumatic Door Openers manufactured by Chase Industries, Inc., 10021 Commerce Park Drive, Cincinnati, OH 45246, telephone no: 1-800-305-6736. The manufacturer's name and catalog identification are provided in order to indicate the quality, design and type of operators desired. Other manufacturers' products having equal quality and design will be acceptable, provided the products meet the approval of the owner or contracting officer.

Provide automatic door operators as required. Type shall be motion detector type.

Operators must be pneumatic heavy duty industrial type capable of opening door panels weighing up to 600 pounds. Operators shall mount to the frame head. Actuating controls shall be provided for each single door and each leaf shall open simultaneously and in synchronization. The closing cycle shall be spring operated.

Operators shall be designed to permit continuous manual operation without harming the operator. Operators shall be constructed so that if the doors are activated and then struck with a load, or activated when locked or blocked, no damage to opener mechanism or electronics can occur. Door opening speed shall be adjustable

from 1 to 5 seconds. The operators shall be equipped with a hold-open switch so that each door may be held in the open position. An adjustable checking action shall cushion the door motion on the final opening and closing stages. The openers shall not be attached to the door panel.

The automatic door actuator(s) and control unit(s) shall carry a limited 5 year warranty.

Actuating control must be by motion detector, located at impact side of doors. Provide circuitry to allow future addition of presence sensors on exit side of doors to prevent closing of doors against traffic. When the operator is reactivated it will recycle instantaneously to the full open position.

Door mechanism must meet OSHA and all fire code requirements for exits on openings where one-way traffic flow is to exterior of building.

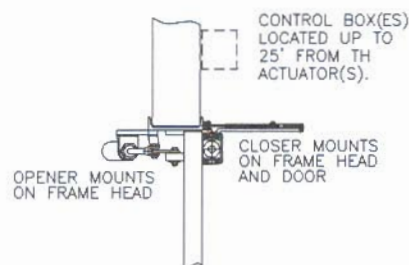
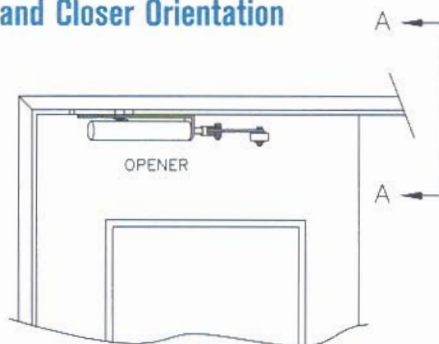
**PLUMBING SECTION**

Compressor specifications: See specifications or consult factory.

**ELECTRICAL SECTION**

Electrical supply for automatic door operators: Junction box (4") 110 VAC, 60Hz, 15 AMP outlet to be furnished at each control unit location.

**Section A-A Opener and Closer Orientation**



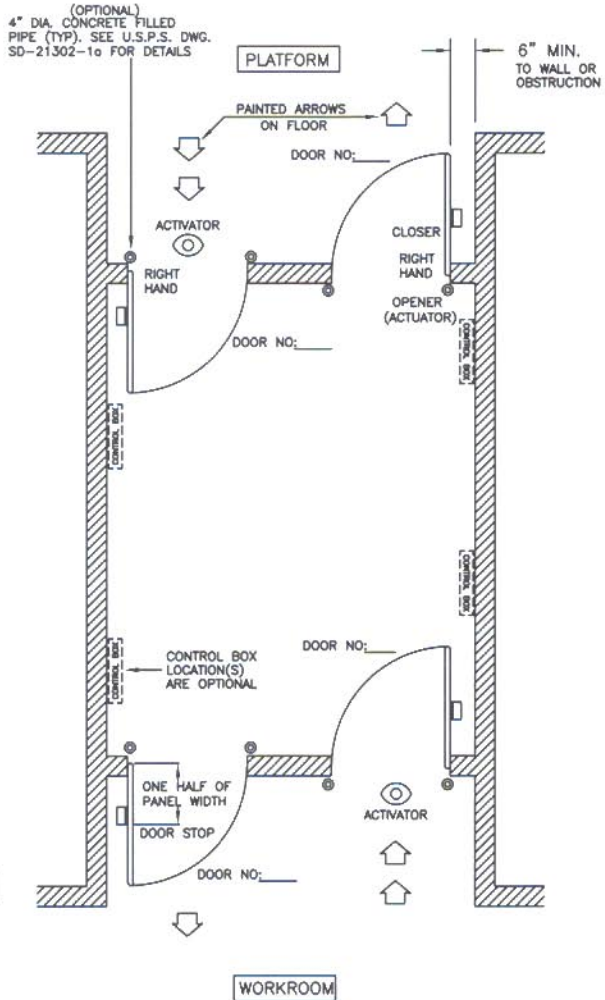
## Traffic Pattern Number USPS-7 (Two Vestibules) – One Way Traffic

**Typical Platform Vestibule Layout For Automatic Door Devices Used With Metal Solid Doors – Flush Or Center Hung (as shown)**

**Per 4 Door Vestibule:**

- 2- Model DD-2101  Both panels to open simultaneously
- 4- Model DD-2100  Each panel to operate independently

OPTIONAL AIR COMPRESSOR. RECOMMENDED LOCATION INSIDE BUILDING



**Type of Application**

- Carrier/Personnel
- Mailing/Personnel
- Center Hung Doors
- Flush Doors

**Specify Items Required**

No.	Item	Type (If Applicable)	No.	Item	Type (If Applicable)
_____	Control	_____	_____	Door Stops, Floor	_____
_____	Actuator	_____	_____	Door Stops, Head	_____
_____	Closers	_____	_____	Other	_____
_____	Activator	_____	_____	Other	_____
_____	Sensors	_____	_____	Other	_____
_____	Compressor	_____			

**Special Application**

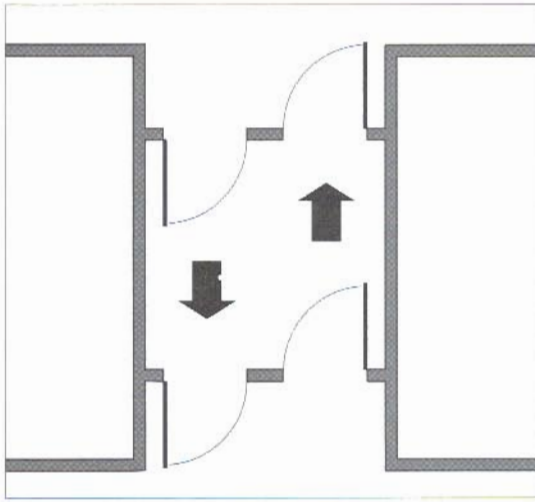
- Fail-Secure
- Fire
- Other

**Additional Information**

\_\_\_\_\_

\_\_\_\_\_

\_\_\_\_\_



**Traffic Pattern USPS-7 (Two Vestibules)**

**Typical Architectural Specifications – Automatic Door Operators  
Carrier/Mailing Platform Vestibule**

**MANUFACTURER:**

Operators specified herein are Door Dynamics "Kwik-Op" 600 Pneumatic Door Openers manufactured by Chase Industries, Inc., 10021 Commerce Park Drive, Cincinnati, OH 45246, telephone no: 1-800-305-6736. The manufacturer's name and catalog identification are provided in order to indicate the quality, design and type of operators desired. Other manufacturers' products having equal quality and design will be acceptable, provided the products meet the approval of the owner or contracting officer.

Provide automatic door operators as required. Type shall be motion detector type.

Operators must be pneumatic heavy duty industrial type capable of opening door panels weighing up to 600 pounds. Operators shall mount to the frame head. Actuating controls shall be provided for each single door and each leaf shall open simultaneously and in synchronization. The closing cycle shall be spring operated.

Operators shall be designed to permit continuous manual operation without harming the operator. Operators shall be constructed so that if the doors are activated and then struck with a load, or activated when locked or blocked, no damage to opener mechanism or electronics can occur. Door opening speed shall be adjustable

from 1 to 5 seconds. The operators shall be equipped with a hold-open switch so that each door may be held in the open position. An adjustable checking action shall cushion the door motion on the final opening and closing stages. The openers shall not be attached to the door panel.

The automatic door actuator(s) and control unit(s) shall carry a limited 5 year warranty.

Actuating control must be by motion detector, located at impact side of doors. Provide circuitry to allow future addition of presence sensors on exit side of doors to prevent closing of doors against traffic. When the operator is reactivated it will recycle instantaneously to the full open position.

Door mechanism must meet OSHA and all fire code requirements for exits on openings where one-way traffic flow is to exterior of building.

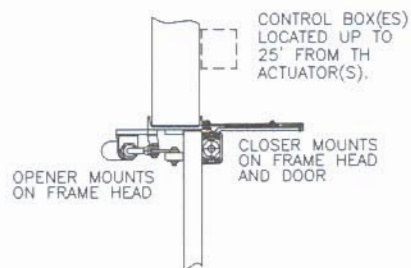
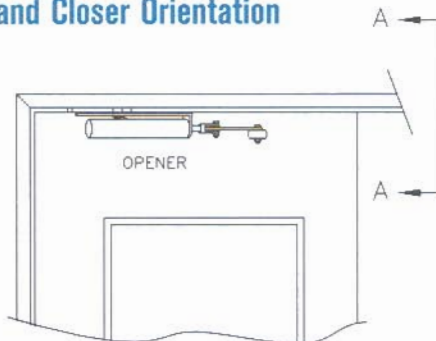
**PLUMBING SECTION**

Compressor specifications: See specifications or consult factory.

**ELECTRICAL SECTION**

Electrical supply for automatic door operators: Junction box (4") 110VAC, 60HZ, 15 AMP outlet to be furnished at each control unit location.

**Section A-A  
Opener and Closer Orientation**

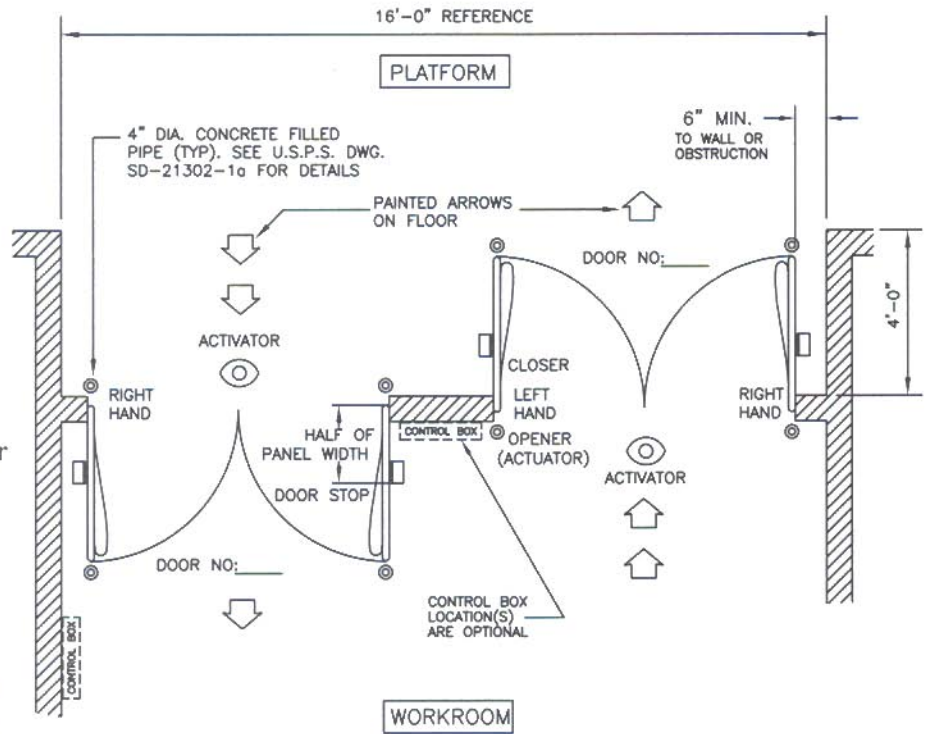


## Traffic Pattern Number USPS-8 (Vestibule) – One Way Traffic

Typical Platform  
Layout For  
Automatic Door  
Devices Used With  
Metal Solid Doors –  
Flush Or Center  
Hung (as shown)

1- Model  DD-2200 Required for each pair of doors

OPTIONAL AIR COMPRESSOR. RECOMMENDED LOCATION INSIDE BUILDING



### Type of Application

- Carrier/Personnel     Mailing/Personnel     Center Hung Doors     Flush Doors

### Specify Items Required

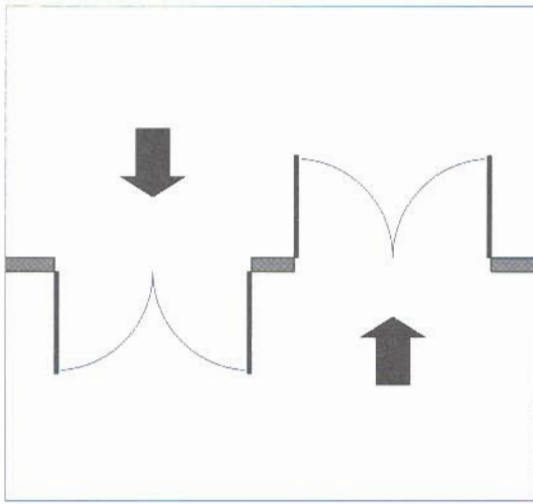
No.	Item	Type (If Applicable)	No.	Item	Type (If Applicable)
_____	Control	_____	_____	Door Stops, Floor	_____
_____	Actuator	_____	_____	Door Stops, Head	_____
_____	Closers	_____	_____	Other	_____
_____	Activator	_____	_____	Other	_____
_____	Sensors	_____	_____	Other	_____
_____	Compressor	_____	_____		

### Special Application

- Fail-Secure  
 Fire  
 Other

### Additional Information

\_\_\_\_\_  
\_\_\_\_\_  
\_\_\_\_\_



**Traffic Pattern USPS-8 (Vestibule)**

**Typical Architectural Specifications – Automatic Door Operators  
Carrier/Mailing Platform Vestibule**

**MANUFACTURER:**

Operators specified herein are Door Dynamics Kwik-Op 600 Pneumatic Door Openers manufactured by Chase Industries, Inc., 10021 Commerce Park Drive, Cincinnati, OH 45246, telephone no: 1-800-305-6736. The manufacturer's name and catalog identification are provided in order to indicate the quality, design and type of operators desired. Other manufacturers' products having equal quality and design will be acceptable, provided the products meet the approval of the owner or contracting officer.

Provide automatic door operators as required. Type shall be motion detector type.

Operators must be pneumatic heavy duty industrial type capable of opening door panels weighing up to 600 pounds. Operators shall mount to the frame head. Actuating controls shall be provided for each pair of single doors and each leaf shall open simultaneously and in synchronization. The closing cycle shall be spring operated.

Operators shall be designed to permit continuous manual operation without harming the operator. Operators shall be constructed so that if the doors are activated and then struck with a load, or activated when locked or blocked, no damage to opener mechanism or electronics can occur. Door opening speed shall be adjustable

from 1 to 5 seconds. The operators shall be equipped with a hold-open switch so that each door may be held in the open position. An adjustable checking action shall cushion the door motion on the final opening and closing stages. The openers shall not be attached to the door panel.

The automatic door actuator(s) and control unit(s) shall carry a limited 5 year warranty.

Actuating control must be by motion detector, located at impact side of doors. Provide circuitry to allow future addition of presence sensors on exit side of doors to prevent closing of doors against traffic. When the operator is reactivated it will recycle instantaneously to the full open position.

Door mechanism must meet OSHA and all fire code requirements for exits on openings where one-way traffic flow is to exterior of building.

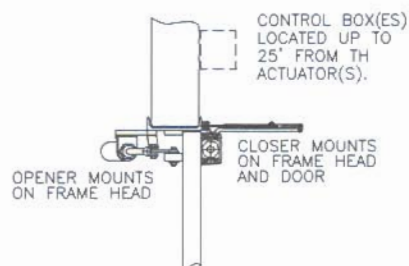
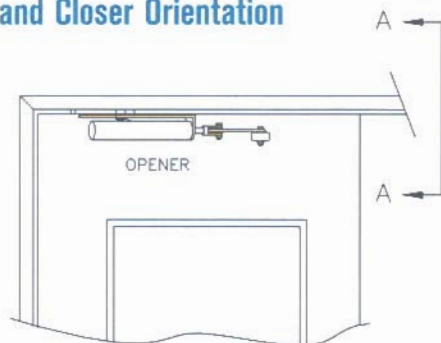
**PLUMBING SECTION**

Compressor specifications: See specifications or consult factory.

**ELECTRICAL SECTION**

Electrical supply for automatic door operators: Junction box (4") 110 VAC, 60Hz, 15 AMP outlet to be furnished at each control unit location.

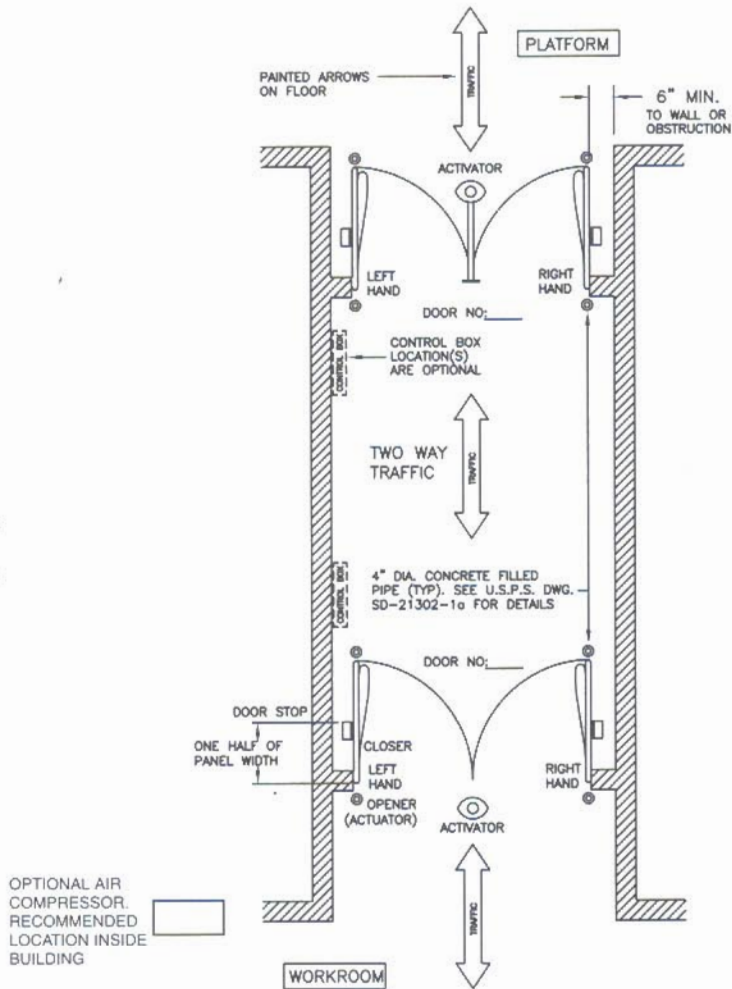
**Section A-A  
Opener and Closer Orientation**



## Traffic Pattern Number USPS-9 (Two Vestibules) – Two Way Traffic

Typical Platform  
Vestibule Layout  
For Automatic Door  
Devices Used With  
Metal Solid Doors –  
Flush Or Center  
Hung (as shown)

- 1- Model DD-2201  All four panels to open simultaneously
- 2- Model DD-2200  Each pair to operate independently



### Type of Application

- Carrier     Mailing     Center Hung Doors     Flush Doors

### Specify Items Required

No.	Item	Type (If Applicable)	No.	Item	Type (If Applicable)
_____	Control	_____	_____	Door Stops, Floor	_____
_____	Actuator	_____	_____	Door Stops, Head	_____
_____	Closers	_____	_____	Other	_____
_____	Activator	_____	_____	Other	_____
_____	Sensors	_____	_____	Other	_____
_____	Compressor	_____	_____	Other	_____

### Special Application

- Fail-Secure
- Fire
- Other

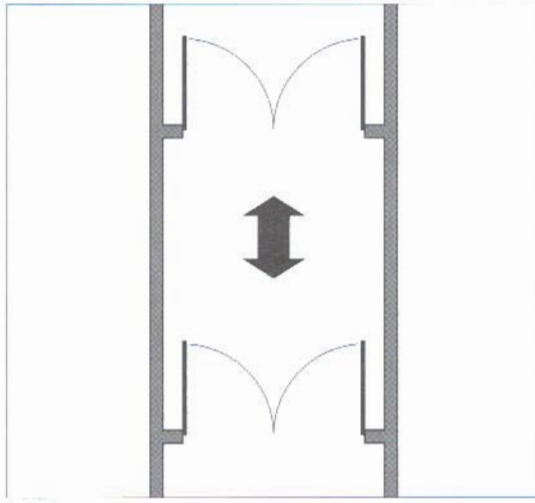
### Additional Information

\_\_\_\_\_

\_\_\_\_\_

\_\_\_\_\_





**Traffic Pattern USPS-9 (Two Vestibules)**

**Typical Architectural Specifications – Automatic Door Operators  
Carrier/Mailing Platform Vestibule**

**MANUFACTURER:**

Operators specified herein are Door Dynamics Kwik-Op 600 Pneumatic Door Openers manufactured by Chase Industries, Inc., 10021 Commerce Park Drive, Cincinnati, OH 45246, telephone no: 1-800-305-6736. The manufacturer's name and catalog identification are provided in order to indicate the quality, design and type of operators desired. Other manufacturers' products having equal quality and design will be acceptable, provided the products meet the approval of the owner or contracting officer.

Provide automatic door operators as required. Type shall be motion detector type.

Operators must be pneumatic heavy duty industrial type capable of opening door panels weighing up to 600 pounds. Operators shall mount to the frame head. Actuating controls shall be provided for each pair of single doors and each leaf shall open simultaneously and in synchronization. The closing cycle shall be spring operated.

Operators shall be designed to permit continuous manual operation without harming the operator. Operators shall be constructed so that if the doors are activated and then struck with a load, or activated when locked or blocked, no damage to opener mechanism or electronics can occur. Door opening speed shall be adjustable

from 1 to 5 seconds. The operators shall be equipped with a hold-open switch so that each door may be held in the open position. An adjustable checking action shall cushion the door motion on the final opening and closing stages. The openers shall not be attached to the door panel.

The automatic door actuator(s) and control unit(s) shall carry a limited 5 year warranty.

Actuating control must be by motion detector, located at impact side of doors. Provide circuitry to allow future addition of presence sensors on exit side of doors to prevent closing of doors against traffic. When the operator is reactivated it will recycle instantaneously to the full open position.

Door mechanism must meet OSHA and all fire code requirements for exits on openings where one-way traffic flow is to exterior of building.

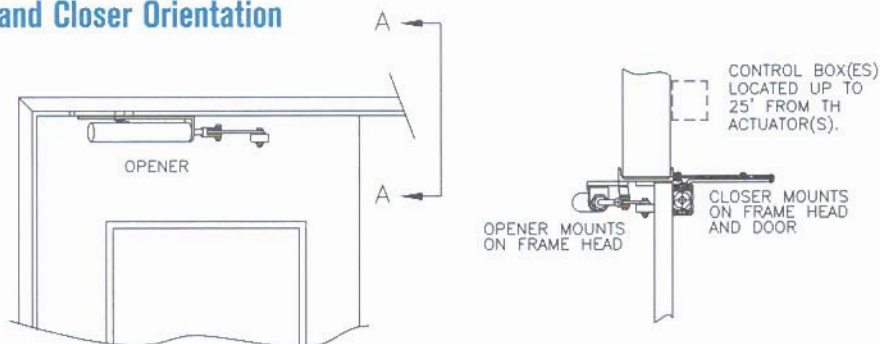
**PLUMBING SECTION**

Compressor specifications: See specifications or consult factory.

**ELECTRICAL SECTION**

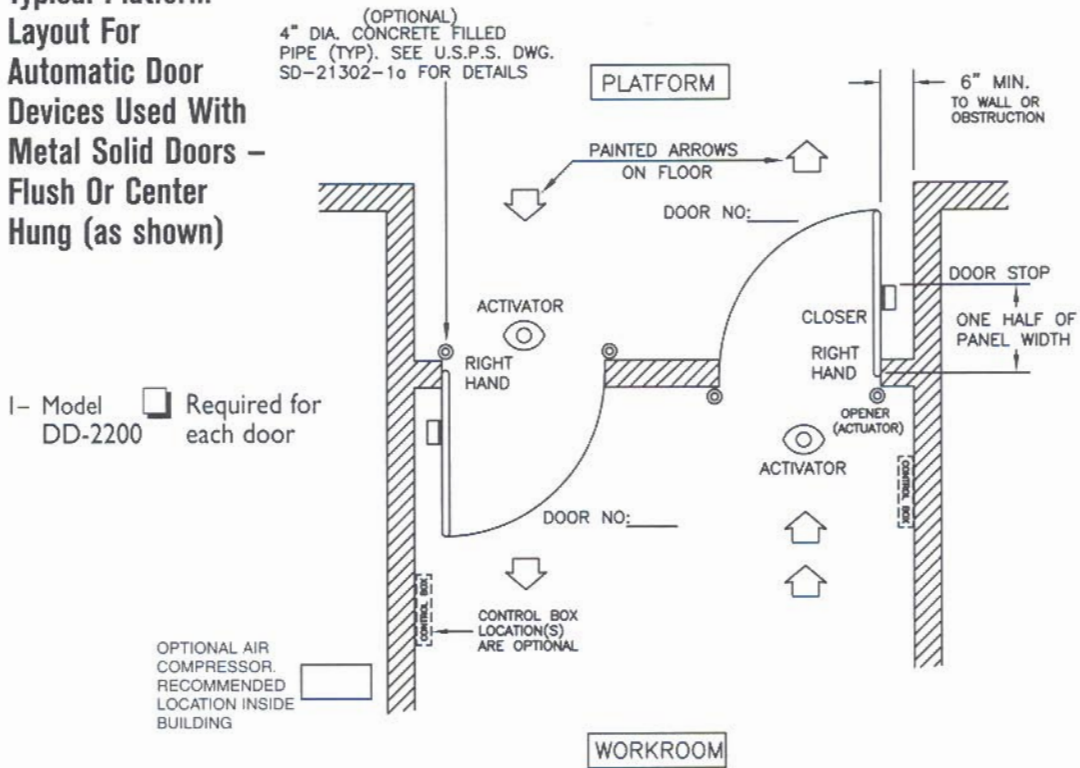
Electrical supply for automatic door operators: Junction box (4") 110 VAC, 60Hz, 15 AMP outlet to be furnished at each control unit location.

**Section A-A  
Opener and Closer Orientation**



## Traffic Pattern Number USPS-10 (Vestibule) – One Way Traffic

### Typical Platform Layout For Automatic Door Devices Used With Metal Solid Doors – Flush Or Center Hung (as shown)



I- Model  Required for  
DD-2200 each door

### Type of Application

- Carrier     Mailing     Center Hung Doors     Flush Doors

### Specify Items Required

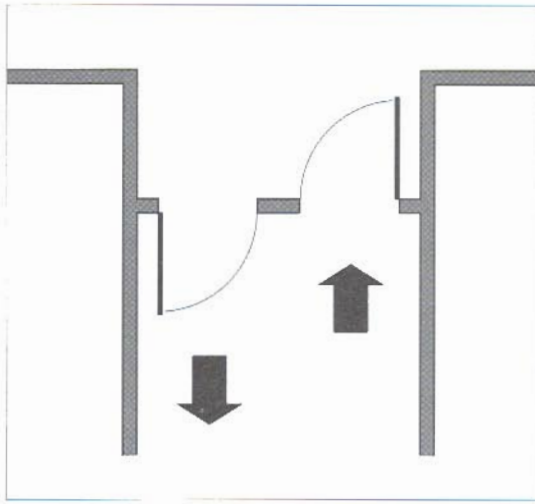
No.	Item	Type (If Applicable)	No.	Item	Type (If Applicable)
_____	Control	_____	_____	Door Stops, Floor	_____
_____	Actuator	_____	_____	Door Stops, Head	_____
_____	Closers	_____	_____	Other	_____
_____	Activator	_____	_____	Other	_____
_____	Sensors	_____	_____	Other	_____
_____	Compressor	_____	_____	Other	_____

### Special Application

- Fail-Secure  
 Fire  
 Other

### Additional Information

\_\_\_\_\_  
\_\_\_\_\_  
\_\_\_\_\_



**Traffic Pattern USPS-10 (Vestibule)**

**Typical Architectural Specifications – Automatic Door Operators  
Carrier/Mailing Platform Vestibule**

**MANUFACTURER:**

Operators specified herein are Door Dynamics Kwik-Op 600 Pneumatic Door Openers manufactured by Chase Industries, Inc., 10021 Commerce Park Drive, Cincinnati, OH 45246, telephone no: 1-800-305-6736. The manufacturer's name and catalog identification are provided in order to indicate the quality, design and type of operators desired. Other manufacturers' products having equal quality and design will be acceptable, provided the products meet the approval of the owner or contracting officer.

Provide automatic door operators as required. Type shall be motion detector type.

Operators must be pneumatic heavy duty industrial type capable of opening door panels weighing up to 600 pounds. Operators shall mount to the frame head. Actuating controls shall be provided for each single door and each leaf shall open simultaneously and in synchronization. The closing cycle shall be spring operated.

Operators shall be designed to permit continuous manual operation without harming the operator. Operators shall be constructed so that if the doors are activated and then struck with a load, or activated when locked or blocked, no damage to opener mechanism or electronics can occur.

Door opening speed shall be adjustable from 1 to 5 seconds. The operators shall be equipped with a hold-open switch so that each door may be held in the open position. An adjustable checking action shall cushion the door motion on the final opening and closing stages. The openers shall not be attached to the door panel.

The automatic door actuator(s) and control unit(s) shall carry a limited 5 year warranty.

Actuating control must be by motion detector, located at impact side of doors. Provide circuitry to allow future addition of presence sensors on exit side of doors to prevent closing of doors against traffic. When the operator is reactivated it will recycle instantaneously to the full open position.

Door mechanism must meet OSHA and all fire code requirements for exits on openings where one-way traffic flow is to exterior of building.

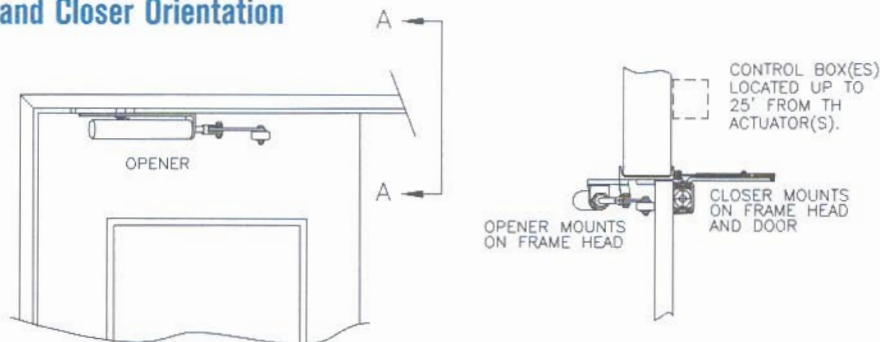
**PLUMBING SECTION**

Compressor specifications: See specifications or consult factory.

**ELECTRICAL SECTION**

Electrical supply for automatic door operators: Junction box (4") 110VAC, 60Hz, 15 AMP outlet to be furnished at each control unit location.

**Section A-A  
Opener and Closer Orientation**

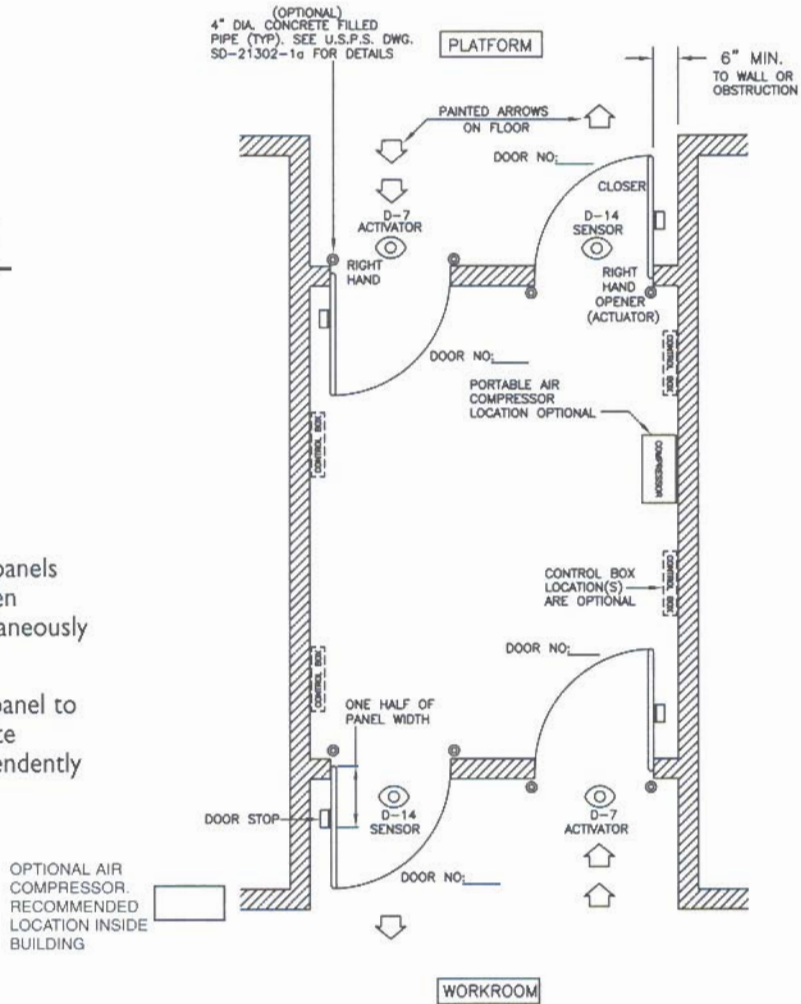


## Traffic Pattern Number USPS-11 (Two Vestibules) – One Way Traffic

Typical Vestibule  
Layout For  
Automatic Door  
Devices Used With  
Metal Solid Doors –  
Flush Or Center  
Hung (as shown)

**Per 4 Door Vestibule:**

- 2- Model  DD-2101 Both panels to open simultaneously
- 4- Model  DD-2100 Each panel to operate independently



**Type of Application**

- Carrier
- Mailing
- Center Hung Doors
- Flush Doors

**Specify Items Required**

No.	Item	Type (If Applicable)	No.	Item	Type (If Applicable)
_____	Control	_____	_____	Door Stops, Floor	_____
_____	Actuator	_____	_____	Door Stops, Head	_____
_____	Closers	_____	_____	Other	_____
_____	Motion Detector	_____	_____	Other	_____
_____	Sensors	_____	_____	Other	_____
_____	Compressor	_____			

**Special Application**

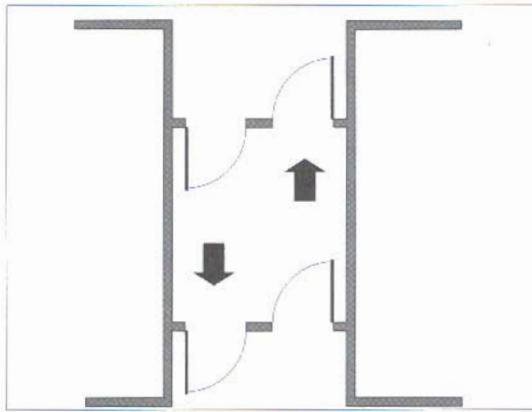
- Fail-Secure
- Fire
- Other

**Additional Information**

\_\_\_\_\_

\_\_\_\_\_

\_\_\_\_\_



## Traffic Pattern USPS-11 (Two Vestibules)

### Typical Architectural Specifications – Automatic Door Operators Carrier/Mailing Platform Vestibule

#### MANUFACTURER:

Operators specified herein are Door Dynamics "Kwik-Op" 600 Pneumatic Door Openers manufactured by Chase Industries, Inc., 10021 Commerce Park Drive, Cincinnati, OH 45246, telephone no: 1-800-305-6736. The manufacturer's name and catalog identification are provided in order to indicate the quality, design and type of operators desired. Other manufacturers' products having equal quality and design will be acceptable, provided the products meet the approval of the owner or contracting officer.

Provide automatic door operators as required. Type shall be motion detector type.

Operators must be pneumatic heavy duty industrial type capable of opening door panels weighing up to 600 pounds. Operators shall mount to the frame head. Actuating controls shall be provided for each single door, and each leaf shall open simultaneously and in synchronization. The closing cycle shall be spring operated.

Operators shall be designed to permit continuous manual operation without harming the operator. Operators shall be constructed so that if the doors are activated and then struck with a load, or activated when locked or blocked, no damage to opener mechanism or electronics can occur. Door opening speed shall be adjustable from 1 to 5 seconds. The operators shall be equipped with a hold-open switch so that each door may be held in the open position. An adjustable checking

action shall cushion the door motion on the final opening and closing stages. The openers shall not be attached to the door panel.

The automatic door actuator(s) and control unit(s) shall carry a limited 5 year warranty.

Actuating control must be by motion detector, located at impact side of doors. Provide circuitry to allow future addition of presence sensors on exit side of doors to prevent closing of doors against traffic. When the operator is reactivated it will recycle instantaneously to the full open position.

Door mechanism must meet OSHA and all fire code requirements for exits on openings where one-way traffic flow is to exterior of building.

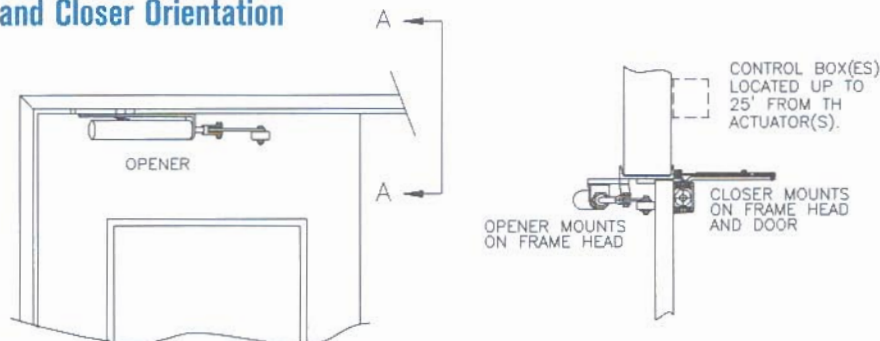
#### PLUMBING SECTION

Compressor specifications: See specifications or consult factory.

#### ELECTRICAL SECTION

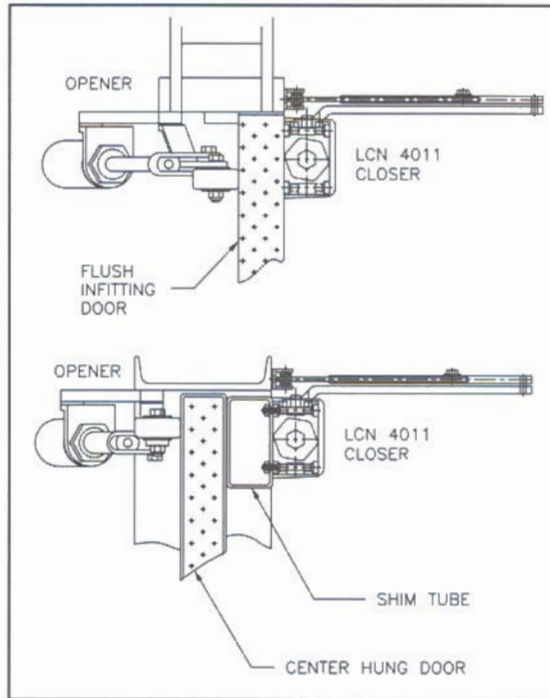
Electrical supply for automatic door operators: Junction box (4") 110 VAC, 60Hz, 15 AMP outlet to be furnished at each control unit location.

### Section A-A Opener and Closer Orientation



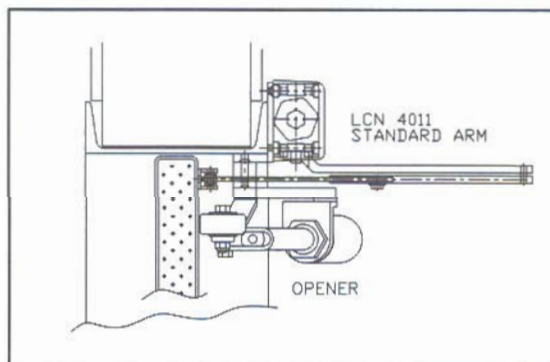
## Selection Guide Mounting Arrangement

These four mounting methods accommodate nearly all possible applications for the Kwik-Op 600 Opener/Closer System.



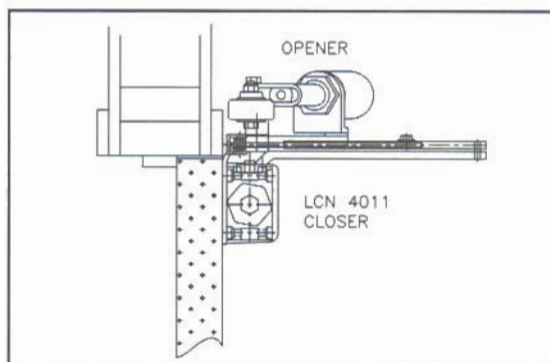
### Standard Mounting – Opposed Opener/Closer

Recommended for most applications. Universal arrangement can be mounted on virtually all types of swing doors. Ideal for new construction or retrofit on existing swing doors. May be used on flush infitting or center hung doors.



### Push Side Opener/Closer Mounting

Allows all components to be mounted to the head on the "Push Side" with factory supplied bracket. Ideal for applications where swing side of door has insufficient clearance for closer projection and on outswinging security doors. Can be used on center hung or flush infitting doors. Flush infitting application requires optional closer extension arm.



### Hinge Side Opener/Closer Mounting

Allows all components to be mounted on the hinge (swing) side of the doors using the factory supplied mounting bracket. When the doors are fully opened the entire door opening is clear for passage. Ideal for clean rooms and in-swinging security doors. Use only on flush infitting doors.

## Door Dynamics 5 Year Limited Warranty

Door Dynamics products are warranted against defects in materials or workmanship for a period of sixty-two months from date of shipment of materials and when installed in accordance with the installation instructions furnished by Chase Industries, Inc.

This warranty is subject to the following conditions:

Defective parts must be returned to Chase Industries, Inc. freight pre-paid and properly packaged. Returns of defective parts are subject to inspection for damages. Prior notification for return must be given to Chase Industries, Inc.

- First Year and Two Months      100% parts warranty
- Second Year                            80% parts warranty
- Third Year                                60% parts warranty
- Fourth Year                              40% parts warranty
- Fifth Year                                 20% parts warranty

The miscellaneous Controls, Compressors, Door Closers, Motion Detectors, Presence Sensors, D-14 Safety Zone Units, Door Beams and Switches, are not included in this program. They are covered by the normal original manufacturers' warranties, guaranteed by Chase Industries, Inc. as their representative.

This warranty does not cover defects due to improper installation or failure to exercise normal maintenance under the terms of this warranty.

Chase Industries, Inc. is not responsible or liable for indirect, special or consequential damages arising out of or in connection with the use or performance of the product, or caused by or attributable to acts of God, abuse, misuse, improper or abnormal usage, faulty installation or improper maintenance.

Sold To: \_\_\_\_\_ Installation At: \_\_\_\_\_

Address: \_\_\_\_\_ Address: \_\_\_\_\_

City: \_\_\_\_\_ City: \_\_\_\_\_

State, Zip \_\_\_\_\_ State, Zip \_\_\_\_\_

Phone: \_\_\_\_\_ Phone: \_\_\_\_\_

Invoice Number: \_\_\_\_\_ Ship Date: \_\_\_\_\_

Serial Numbers: \_\_\_\_\_

\_\_\_\_\_

\_\_\_\_\_

\_\_\_\_\_

---

38

**This page is intentionally left blank.**



## References

Door Dynamics, in order to provide the most accurate and useful information for your decision making process, has compiled the following list of references and installations. These references may be contacted to answer your questions regarding the Kwik-Op Automatic Door Operators, and to confirm approval of Kwik-Op from USPS National Headquarters, Washington, DC.

1. Questions relating to acceptability of Door Dynamics Kwik-Op or building specifications for the U.S. Postal Service may be directed to:

Mr. Warren Walker Phone: (202) 268-3905  
 Facilities Program Management  
 475 L'Enfant Plaza SW  
 Washington, DC 20260

Or contact his associate:

Ms. Jennifer Beiro-Reveille Phone: (202) 268-5515

2. Questions regarding longevity, maintenance costs reductions or other subjects can be directed to the following reference list. These personnel have first hand field knowledge and are willing to answer your questions.

Mr. Steve M. Bloom  
 Operations Manager  
 Miami, FL - AMF  
 (305) 599-1789

Mr. Michael Tomaszek  
 Postmaster  
 Groton, CT - USPS  
 (860) 445-8154

Mr. Leroy Gumpher  
 Super. Maint. Operations  
 Harrisburg, PA  
 (717) 257-2144

Mr. Joe Dimino  
 Project Manager  
 Hoboken, NJ - FSO  
 (201) 714-5449

Mr. Elvin Kelston  
 Maint. Manager  
 Merrifield, VA  
 (703) 698-8452

Mr. L.T. Johnson  
 Manager / Field  
 Maintenance Operations  
 Salt Lake City, UT  
 (801) 974-2378

Mr. Mike Daniel  
 Postmaster - USPS  
 Williamsburg, VA  
 (757) 229-1593

Mr. Bill Klubeck  
 Manager/Maint. Operations  
 New Haven, CT  
 (203) 782-7351

Mr. Robert Garwacki  
 Super. Maint. Operations  
 Hampton, ME  
 (207) 941-2042

Mr. Robert Fromel  
 Supervisor Bldg. Serv.  
 Pensacola, FL - GMF  
 (904) 434-9113

Mr. Alan Scott Tinsley  
 USPS  
 Muncie, IN 47302-9994  
 (317) 286-9613

Mr. Leonard Dixon  
 Super. Maint. Operations  
 Shreveport, LA P & DC  
 (318) 677-2280

Mr. Vince Hennessy  
 USPS - Retired  
 (P.O. Consultant)  
 Sverdrup-Gillbane  
 (703) 406-0926

Mr. Sam Gunnels  
 Maint. Eng. Specialist  
 Dallas, TX - P & DC  
 (214) 760-4933

Mr. Leroy Nielson  
 Mgr. Field Maint. Oper.  
 Spokane, WA  
 (509) 459-0325

Mr. Wesley Weiss  
 Maint. Manager  
 Syracuse, NY  
 (315) 452-3477

Mr. Barry Brenner  
 Mgr. of Maint.  
 Eugene, OR - GMF  
 (541) 998-5140

## Door Dynamics Partial Installation List

### Kwik-Op 600 Automatic Door Operators As Installed In U.S. Postal Service Facilities

Bill Burt  
USPS-GMF  
1441 E. Buckeye Road  
Phoenix, AZ 85034-9998  
(602) 223-3652  
1 unit for 1 pair of flush metal,  
200# per panel  
1992

Terry Nicholas  
USPS  
1501 S Cherrybell  
Tucson, AZ 85726-9731  
(602) 620-5042  
2 units for 2 pair metal flush  
doors, 100# per panel  
1987

USPS P&D  
4700 E. McCain Blvd.  
North Little Rock, AR  
272231-9731  
(501) 945-6620

USPS  
7001 South Garfield Ave.  
Bell Gardens, CA 90201  
2 units for 6'x8' Durulite  
double doors  
1995

USPS  
Berkeley Station, CA  
2 units for 2 pairs of  
double doors  
1994

USPS  
2140 Hollywood Way  
Burbank, CA 91505  
3 units for 3 metal flush doors,  
100# per panel  
1989

Roger Farns  
USPS  
6929 Fair Oaks Blvd.  
Carmichael, CA 95608  
(916) 483-8568  
8 units for 8 pair of Durus  
doors, 100# per panel  
1991

Vance Okumura  
USPS  
2130 Mariposa Ave.  
El Segundo, CA 90245  
(310) 647-1715  
4 units for 4 pair hollow metal  
125# per panel  
1992

Paul Hisel  
USPS  
Orange Glen Facilities  
Escondido, CA 92025  
4 units for 4 pair metal flush  
doors, 100# per panel  
1982

Carol Kay  
USPS-MPDC  
13031 W. Jefferson Blvd.  
Inglewood, CA 90311-9731  
(310) 301-1330  
2 units for 2 pair - 1995  
6 units for 6 pair of center hung  
double doors - 1995

Maintenance Manager  
USPS  
15692 Sand Canyon Ave.  
Irvine, CA 92715-9998  
4 units for 4 pair of double  
doors, 100# per panel  
1992

Lloyd Curtis  
USPS-Rancho Park  
11214 Exposition Blvd  
Los Angeles, CA 90064  
(310) 575-3424  
6 units for 6 pair of Durus  
doors, 150# per panel  
1991

Ron Cole  
USPS  
1717 Paradise Road  
Modesto, CA 95351  
(209) 523-8326  
4 units for 4 single Durus  
doors, 125# per panel  
1992

Dave Garber  
USPS Casa Grande Station  
1601 Corporate Circle  
Petaluma, CA 94954  
(707) 765-9373  
8 units for 8 pair Durus doors.  
150# per panel  
1991

Willie Jue  
USPS-GMF  
1300 Evans Ave, Room 169  
San Francisco, CA 94188-9731  
(415) 550-5104  
4 units for 4 pair of double  
doors, 1993  
5 units for 5 pair of double  
doors, 1995

Tom Nester  
USPS  
151 Mendell St.  
San Francisco, CA 94124-9731  
8 units for 8 pair of double  
doors, 1993  
4 units for 4 pair of double  
doors, 1994

Anthony Plante  
USPS  
5609 Yolanda  
Tarazana, CA 91356  
(818) 345-3172  
6 units for 6 pair Durus doors,  
150# per panel  
1989

Perry Vozzelo  
USPS-GMF  
15701 Sherman Way  
Van Nuys, CA 91409-9991  
(818) 362-9790  
20 units for 20 pair metal flush  
doors, 100# per panel  
1985

Maintenance Manager  
USPS-GMF  
960 Postal Way  
Vista, CA 92083  
(619) 726-0772  
4 units for 4 single metal flush  
doors, 100# per panel  
1982

USPS-GMF  
3655 East Fountain Blvd.  
Colorado Springs, CO 80910  
(719) 570-5350  
4 units for 4 pair of  
Durus double doors  
1994

USPS-GMF  
Denver, CO  
(303) 297-6597  
1 unit for 1 pair of  
double doors  
1993

Sheldon Cooper  
USPS  
120 Middle St.  
Bridgeport, CT 06602  
(203) 332-5320  
2 units for 2 pairs of  
double doors  
1995

Robert Ravenelle  
USPS  
100 Plaza Ct.  
Groton, CT  
(203) 445-8154  
4 units for 4 pair Durus doors,  
150# per panel  
1991

Anthony Penna  
USPS-GMF  
50 Brewery St.  
New Haven, CT 06511-9731  
(203) 782-7363  
8 units for 8 pair Durus doors,  
150# per panel  
1992

USPS-Bulk Mail  
Washington, DC  
(202) 636-1335  
1 unit for 1 pair of  
double doors  
1993

Paul Wheeler  
USPS-GMF  
1900 W. Oakland Park Blvd.  
Fort Lauderdale, FL  
33310-9733  
(305) 527-3206  
16 units for 16 pair Durus  
doors, 100# per panel  
1992

## Door Dynamics Partial Installation List [cont.]

Stanley Murray  
USPS-GMF  
2200 NW 77th Ave.  
Miami, FL 33152-9991  
(305) 470-0209  
32 units for 16 pair Durus  
doors, 100# per panel  
1991

Sam Beck  
USPS  
1400 W. Jordan Street  
Pensacola, FL 32501-9702  
(904) 434-9196  
1 unit for 1 pair double  
doors, 1994  
1 unit for 1 pair double  
doors, 1993  
1 unit for 1 pair double  
doors, 1991  
4 units for 4 pair Durus  
doors, 150# per panel  
1990

Linda Van Boven  
USPS-West Palm Beach  
GMF  
3200 Summit Blvd.  
West Palm Beach, FL  
33406  
(407) 697-1956  
7 units for 7 pair of center  
hung doors, 1994  
3 units for 3 pair of  
double doors, 1994

Robert "Doc" Stewart  
USPS-GMF  
500 E. Fullerton Ave.  
Carol Stream, IL  
60199-9731  
(708) 260-5261  
1 unit for 2 pair of  
double doors, 1993  
2 units for 2 pair of  
double doors, 1995

USPS  
Champaign, IL  
(217) 373-6042  
4 units for 4 pair Durulite  
double doors  
1995

USPS-O'Hare  
Chicago, IL  
(312) 686-6970  
3 units for 3 pair of 6' x 7'  
double doors  
1993

Dave Kammerer  
USPS-GMF  
95 State St.  
Peoria, IL 61602  
(708) 946-6455  
6 units for 12 pair of  
hollow metal doors  
1995

Robert Allen Borchers  
USPS  
1050 Country Club Rd  
Woodstock, IL  
60098-9998  
(815) 338-0630  
4 units for 4 single  
metal flush doors,  
100# per panel  
1991

Scott Tinsley  
USPS-P&D  
4300 South Cowan Rd.  
Muncie, IN 47302-9994  
(317) 286-9604  
1 unit for 1 pair of  
Frohmeit D/A doors, 1995  
3 units for 3 pair of  
Frohmeit D/A doors, 1995

Maintenance Manager  
USPS P&D  
Terre Haute, IN  
(812) 231-9400  
8 units for 8 pair of doors  
1997

Maintenance Manager  
USPS P&D  
Brockton, MA  
(508) 427-0013  
4 units, 1996

USPS-BWI-IMF  
Baltimore, MD  
(401) 347-4545  
4 units for 4 pair of  
double doors  
1993

Mike Hayden  
USPS  
Gaithersburg, MD  
(301) 670-6077  
1 unit for 1 pair of  
McQuire Fendor. 200#  
per panel  
1992

USPS-GMF  
Bangor, ME  
(207) 941-2011  
8 units for 8 pairs of  
double doors  
1993

USPS  
1801 N. Garfield  
Traverse City, MI 49689  
(616) 929-2424  
1 unit for 1 steel door,  
1995  
4 units for 4 pair double  
acting doors, 1995

Maint. Dept., Room #79  
USPS  
100 South First St.  
Minneapolis, MN  
55401-9731  
(612) 349-6344  
1 unit for 1 metal clad  
exit door, 1994  
1 unit for 1 pair flush  
double doors, 1994

Maintenance Manager  
USPS P&D  
Hell Gate Station  
Missoula, MT  
4 units, 1996

Gary Sabo  
USPS-GMF  
900 East Market St.  
Greensboro, NC  
27498-9700  
(919) 271-5598  
2 units for 2 pair of  
double doors, 1993  
2 units for 2 single doors,  
1994

USPS  
One Floretta Place  
Raleigh, NC 27676-9731  
(919) 831-3604  
18 units for 18 pair of  
double doors  
1993

Bob McCord  
USPS-P&DC  
307 Industrial Way West  
Eatontown, NJ 07799  
(908) 389-7102  
2 units for 2 pairs of  
double doors  
1994

Mike Rafferty  
USPS-GMF  
421 Benigo Blvd.  
South Jersey, NJ  
08099-9998  
(609) 933-4061  
8 units for 8 pair Durus  
double doors  
1995

John Rakestraw  
USPS  
1135 Broadway NE  
Albuquerque, NM 87101  
(505) 848-3855  
4 units for 4 pair  
metal flush doors,  
100# per panel  
1987

USPS Main Post Office  
404 South Boulder  
Highway  
Henderson, NV  
89015-9998  
4 units for 8 pair of  
double doors  
1995

USPS  
1001 E. Sunset Road  
Las Vegas, NV  
89119-5200  
(702) 361-9271  
7 units for 8 pair of  
double doors, 1994  
1 unit for 1 pair of  
double doors, 1994  
2 units for 2 pair of  
double doors, 1993

USPS-P&D  
2000 Vassar Street  
Reno, NV 89510-9998  
(702) 788-0627  
4 units for 4 pair of  
Durulite double doors,  
1995

Rob Hutcheson  
USPS-GMF  
115 Henry Street  
Binghamton, NY  
13902-9750  
(607) 773-2159  
4 units for 4 pair Durus  
Doors, 125# per panel  
1992

## Door Dynamics Partial Installation List (cont.)

Bill Nieves  
USPS-GMF  
1050 Forbell St., Room 2095  
Brooklyn, NY 11356-9731  
(718) 348-3102  
13 units for 13 pair of  
double doors.  
1993

USPS-Mid Island P&D  
Center  
160 Duryea Road  
Melville, NY 11747-8001  
(516) 755-2548  
2 units for 4 pair of  
double doors, 1994  
8 units for 16 pair of  
double doors, 1994  
1 unit for 1 pair of  
double doors, 1994

Sam Formica  
USPS  
5640 East Taft Road.  
Syracuse, NY 13220-9753  
(315) 452-3466  
2 units for 2 pair of  
double doors  
1995

USPS-GMF Expansion  
Taft Road  
Syracuse, NY 13205  
(315) 452-3508  
12 units for 12 pair of  
center hung double doors  
1995

USPS-P&D  
100 Pitcher St.  
Utica, NY 13502  
(315) 738-5323  
4 units for 4 pair of  
double doors  
1995

USPS  
3148 Gateway Street  
Eugene, OR 97401-9998  
(503) 341-3638  
4 units for 4 pair of  
double doors  
1993

USPS  
3435 Concord Road  
East York, PA 17402-9997  
4 units for 4 pair of  
double doors  
1993

Leroy Gumphier  
USPS-Harrisburg Post Office  
GMF  
1425 Crooked Hill Road  
Harrisburg, PA 17107  
(717) 257-2144  
10 units for 10 pair of  
double doors, 1994

Jim Wagner  
USPS-Lehigh Valley P&D  
17 South Commerce Way  
LeHigh Valley, PA 18002  
(215) 882-3211  
9 units for 9 pair of 6'x8'  
Durus double doors  
1995

Dave Carlson  
USPS-Phili AMF  
1000 Tinicum Island Road  
Philadelphia, PA 19153  
(215) 895-8125  
13 units for 13 pair Durus  
doors, 150# per panel  
1991

Maintenance Manager  
USPS  
Pleasant Hills 500 Regis Ave.  
Pittsburg, PA  
4 units for 4 pair Durus  
doors, 100# per panel  
1992

USPS  
300 S Main St.  
Wilkes-Barre, PA 18701  
(717) 829-5473  
4 units for 4 pair of  
double doors, 1993

Robert Conroy  
USPS-GMF  
24 Corliss Street  
Providence, RI 02904-9731  
(401) 276-6908  
1 unit for 1 pair of doors,  
1992  
5 units for 5 pair of  
double doors  
1995

Sam Gunnels  
USPS-P&D Center  
401 DFW Turnpike  
Dallas, TX 75260-9342  
(214) 741-5508  
23 units for 23 pair of  
double doors  
1995

Richard Kirk  
USPS Houston P&D Center  
401 Franklin Ave.  
Houston, TX 77201-9570  
(713) 26-3110  
8 units for 8 pair of  
Rubbar double doors  
1993

USPS  
401 Franklin Street  
Houston, TX  
(713) 226-3110  
6 units for 6 pair of  
double doors  
1994

USPS  
3680 Pacific Ave.  
Ogden, UT 84401  
2 units for 2 pair of  
double doors  
1993

USPS  
Main Office  
Salt Lake City, UT  
(801) 530-5913  
2 units for 2 pair of doors,  
1995

Gary Farmer  
USPS  
2210 Denver Lane  
Maidens, VA 23102  
(804) 229-1593  
4 units for 4 pair  
steel McQuire doors,  
450# per panel  
1991

USPS  
8409 Lee Highway  
Memfield, VA 22081  
(703) 698-6945  
6 units for 12 pair of  
McQuire doors, 1993

USPS-Dulles AMF  
44715 Prentice Drive  
Sterling, VA 22170  
(703) 406-6632  
16 units for 16 pair of  
steel McQuire doors,  
450# per panel  
1991

USPS  
105 Sykes Avenue  
White River Junction, VT  
05001-9731  
(802) 296-3326  
8 units for 8 pair of  
double doors  
1994

Mr. Leroy Nielson  
USPS  
702 E. Trent Avenue  
Spokane, WA 99202  
(509) 459-0325

USPS  
Charleston, WV  
(304) 357-0611  
7 units for 7 pair of  
double doors  
1993