

# NexGen Infrared Touchless Series

Infrared Touchless Door Activator Switches

INSTALLATION INSTRUCTIONS

## General Description

The NexGen Infrared Touchless actuator is the next generation of automatic door activation switch. The NexGen IR combines the latest advances in infrared sensing technology with durable composite plastics, to create an actuator that is both stylish and tough. NexGen switches are extremely thin and utilize no moving parts. The 4" faceplate is bordered by a clear bezel edge that illuminates upon activation. Their hands free operation makes them ideal for ADA applications. Other applications include clean-room access points, request-to-exit devices (1 amp contact), and point-of-purchase displays. The NexGen Infrared Touchless switch is microprocessor controlled, allowing for superior operation in a smaller unit.

Contents: (1) NexGen IR Switch, (1) Hardware Pack, and (1) Installation Manual.

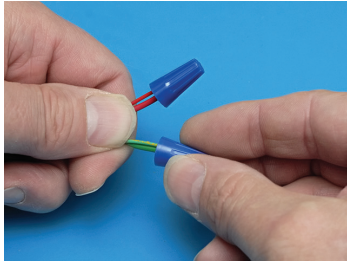


## Basic Installation

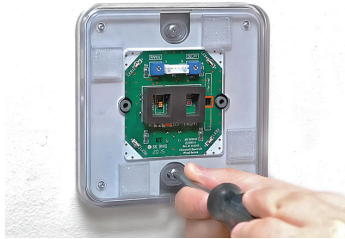
1. Remove faceplate using a screwdriver as shown.



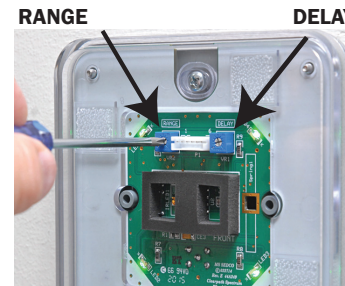
2. SEE WIRING DIAGRAM BELOW  
Make all wiring connections using the wire nuts provided in the hardware package.



3. Install switch to standard single or two gang box using screws supplied in hardware pack.



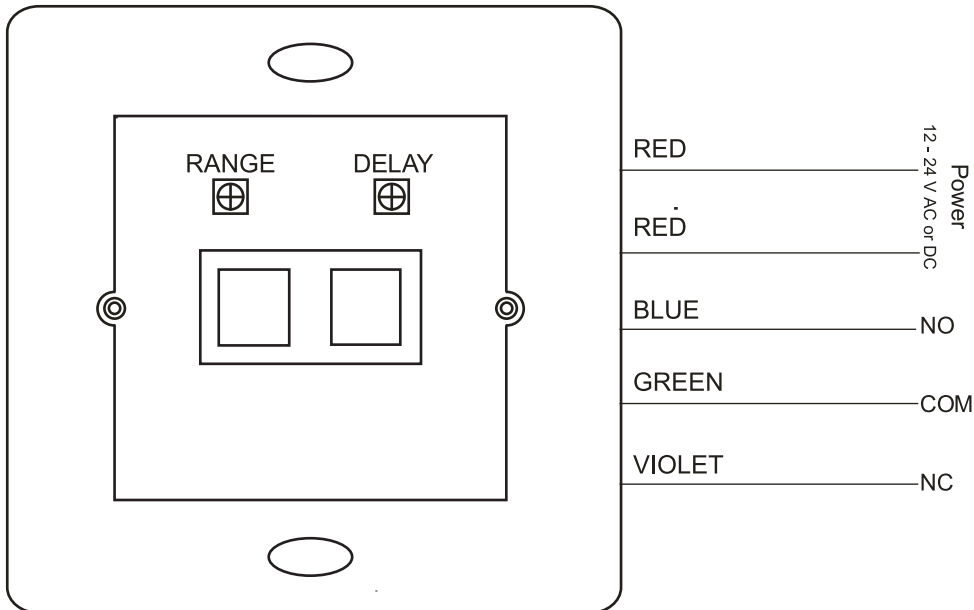
4. Adjust range and delay before activation by turning potentiometer using Philips screwdriver.



5. Replace faceplate and test unit to ensure proper operation.



## WIRING DIAGRAM



Typical wiring: Red wires connect to 12 - 24 V AC or DC.  
Blue wire connects to Activate on Door Control.  
Green wire connects to Common on Door Control.  
Violet wire does not get connected.  
Range adjustment from  $\pm 5''$  to 12".

CCW is minimum. Turn CW to increase.

Delay before activation adjustable from 0.05 to 3 seconds.  
Turn CW to increase.

**NOTE:** To use the NexGen as a replacement for existing two wire switch applications, order our 216-2W-Module.

For further technical assistance, contact the factory at 1-317-842-2545.

